



UHI Research Database pdf download summary

DNA methylation changes in the sperm of captive-reared fish

Barreto, Deiene; Garcia de Leaniz, Carlos; Verspoor, Eric; Coulson, Mark; Sobolewska, Halina; Consuegra, Sonia

Published in:
Molecular Biology and Evolution

Publication date:
2019

The re-use license for this item is:
CC BY-NC

The Document Version you have downloaded here is:
Peer reviewed version

The final published version is available direct from the publisher website at:
[10.1093/molbev/msz135](https://doi.org/10.1093/molbev/msz135)

[Link to author version on UHI Research Database](#)

Citation for published version (APA):

Barreto, D., Garcia de Leaniz, C., Verspoor, E., Coulson, M., Sobolewska, H., & Consuegra, S. (2019). DNA methylation changes in the sperm of captive-reared fish: A route to epigenetic introgression in wild populations. *Molecular Biology and Evolution*, 36(10), 2205-2211. Advance online publication. <https://doi.org/10.1093/molbev/msz135>

General rights

Copyright and moral rights for the publications made accessible in the UHI Research Database are retained by the authors and/or other copyright owners and it is a condition of accessing publications that users recognise and abide by the legal requirements associated with these rights:

- 1) Users may download and print one copy of any publication from the UHI Research Database for the purpose of private study or research.
- 2) You may not further distribute the material or use it for any profit-making activity or commercial gain
- 3) You may freely distribute the URL identifying the publication in the UHI Research Database

Take down policy

If you believe that this document breaches copyright please contact us at RO@uhi.ac.uk providing details; we will remove access to the work immediately and investigate your claim.

DNA methylation changes in the sperm of captive-reared fish: a route to epigenetic introgression in wild populations

Deiene Rodriguez Barreto¹, Carlos Garcia de Leaniz¹, Eric Verspoor², Halina Sobolewska³, Mark Coulson², Sofia Consuegra*¹

Author Affiliations: ¹College of Science, Biosciences Department, Swansea University, Swansea, SA2 8PP, UK. ²Rivers and Lochs Institute, University of the Highlands and Islands, Inverness College, Inverness, IV2 5NA, UK. ³Noahgene Ltd., The e-Centre, Cooperage Way Business Village, Alloa, FK10 3LP, UK

(*Corresponding author)

Keywords: Epigenetic inheritance, DNA methylation, domestication, *Salmo salar*

Abstract

Interbreeding between hatchery-reared and wild fish, through deliberate stocking or escapes from fish farms, can result in rapid phenotypic and gene expression changes in hybrids, but the underlying mechanisms are unknown. We assessed if one generation of captive breeding was sufficient to generate inter- and/or transgenerational epigenetic modifications in Atlantic salmon. We found that the sperm of wild and captive-reared males differed in methylated regions consistent with early epigenetic signatures of domestication. Some of the epigenetic marks that differed between hatchery and wild males affected genes related to transcription, neural development, olfaction and aggression, and were maintained in the offspring beyond developmental reprogramming. Our findings suggest that rearing in captivity may trigger epigenetic modifications in the sperm of hatchery fish that could explain the rapid phenotypic and genetic changes observed among hybrid fish. Epigenetic introgression via fish sperm represents a previously unappreciated mechanism that could compromise locally adapted fish populations.

Captive rearing can cause rapid phenotypic and genetic changes in fish after just one generation (Araki, et al. 2007; Stringwell, et al. 2014), and interbreeding between captive-reared and wild fish can lead to maladaptation to natural conditions (McGinnity, et al. 2003) and reduced fitness of hybrids (Araki, et al. 2007; Araki and Schmid 2010). Genome-wide analyses have explained the molecular basis of phenotypic variation associated with domestication in many species (Rubin, et al. 2010; Wilkinson, et al. 2013; Carneiro, et al. 2014) but have failed to identify common loci or strong signals of selection associated with fish domestication (Ozerov, et al. 2013; Mäkinen, et al. 2015).

Captive-rearing in fish can result in epigenetic (methylation) changes in immune and stress-related genes (Le Luyer, et al. 2017). Such epigenetic changes can respond to environmental stimuli and generate phenotypic variation by modulating gene expression and function. For epigenetic changes to be adaptive and evolutionary relevant, they would need to be transmitted to the offspring (Bossdorf, et al. 2008; Youngson and Whitelaw 2008) and persist across generations (Charlesworth, et al. 2017) to enable selection to act (Bollati and Baccarelli 2010).

Epigenetic signatures in the sperm of zebrafish are maintained in the embryo until the mid-blastula stage (Jiang, et al. 2013). If the same is true for other fish, epigenetic changes in the sperm could facilitate adaptation to captivity. This would be relevant for salmonids which are farmed for food or reared in hatcheries for supportive breeding programmes (Consuegra, et al. 2005; Kostow 2009), and for which captive rearing causes epigenetic changes in sperm (Gavery, et al. 2018). Wild salmon affected by accidental escapes from fish farms or the deliberate stocking of hatchery fish often display genetic changes (Ciborowski, et al. 2007; Glover, et al. 2013), altered age and size at maturation (Bolstad, et al. 2017), behavioural

mismatch (Houde, et al. 2010) and lower reproductive success (Theriault, et al. 2011).

Whether epigenetic changes also arise is not known.

We compared genome-wide DNA methylation profiles in the sperm of wild and hatchery-reared Atlantic salmon males and their offspring to identify potentially heritable hatchery-induced epigenetic modifications. Three groups of wild and hatchery-reared salmon from the River Allier (France) were analysed (Tables S1-S3). Wild anadromous males (W) were caught in April 2015. Hatchery H1 males were mature parr (0⁺) (2014 cohort) produced from re-conditioned wild males and females maintained in the hatchery for two consecutive seasons, and hatchery H2 males were mature parr (0⁺) (2014 cohort) from crossing females hatched and reared in the hatchery with wild re-conditioned males. Both H1 and H2 were reared under identical conditions. Sperm from three males of each group was used to independently fertilise groups of pooled eggs of the same three wild females (Figure 1).

Differentially methylated regions among parental groups

The results from MethylAction and MEDIPS concurred in the identification of differentially methylated regions (DMRs) and the loci affected by them. In total, 165,597 of the DMRs identified among all groups coincided between MethylAction and MEDIPS. Of the loci affected by those DMRs, 19,510 out of the 21,195 identified by MethylAction were also identified using MEDIPS (92.05%).

Pairwise methylome differences using MEDIPS identified 55 significant DMRs between W and H1, 22,563 between H1 and H2, and 298,980 between W and H2 (Figure 2), after applying a q-value ≤ 0.05 , and merging neighbouring significant windows. These DMRs were overlapping or neighbouring at 47, 11,567 and 38,253 loci between W and H1, H1 and H2, and W and H2, respectively (Figure S4).

Using MethylAction, DMRs identified from the simultaneous comparison between the three parental groups were classified as ‘frequent’ if all the samples within each group had a consistent methylation status (hyper or hypomethylated), or as ‘other’ if they lacked within-group consistency (Bhasin, et al. 2015). Only methylation patterns of frequent and statistically significant DMRs were considered further. Several of those DMRs (46,293) were consistently hypermethylated in H2 compared to W and H1 individuals (Figure 1B). In total, 21,195 loci were affected (overlapping or neighbouring) by the +50,000 ‘frequent’ DMRs identified among all groups.

Of the 55 DMRs identified by MEDIPS between W and H1, 43 (78%) occurred between W and H2. Of these, 35 completely overlapped with DMRs identified by Methylaction, and the rest were between 2 and 1000 bp distance, all affecting the same loci. These 43 DMRs, shared by both hatchery groups and different from wild individuals, appear to be distinctive signatures of hatchery reared fish.

Methylation comparison between parental and offspring groups

Parents and offspring (mature male parr) showed significant differences in global sperm methylation enrichment scores only between H2 to W males (W=1.14±0.05; H1=1.25±0.10; H2=1.44±0.08; ANOVA $F_{2,6}=7.683$, $p=0.0221$; Tukey HSD test W-H1; $p=0.42$; H2-H1; $p=0.10$; W-H2; $p=0.02$) (Table S1). Pairwise correlation coefficients of genome-wide coverage were on average $r\sim 0.60$ within groups (Figure S3).

The first two components of a PCA of normalized total read counts of 1000 bp sliding windows explained 96.49% of the variance (Figure S5). PC1 explained 91.32%, and allowed differentiation between parents and offspring ($F_{1,12}=17.258$; $p=0.001$), and groups within generations ($F_{4,12}=3.576$; $p=0.038$) (Figure S5). PC1 scores differed significantly between the

sperm of wild parents and their offspring (post hoc Tukey HSD test; $p=0.02$), but not between the sperm of hatchery parents and their offspring (post hoc Tukey HSD test; $H1-H1_{off}=0.98$; $H2-H2_{off}=0.19$). This suggests that the hatchery environment (e.g. diet, confinement) had an impact on the methylation status of the wild offspring sperm, born and raised under those conditions. The comparisons of genetic diversity among parental groups and between parents and offspring based on 927 SNPs indicated that there were no significant genetic differences among groups (Fisher's exact test, $P=1.00$), suggesting that differences in the genetic background are not responsible for the methylation differences observed.

For the 43 DMRs between wild and hatchery parents, all hatchery individuals (parents and offspring) clustered together with the wild offspring and separately from the wild parents (Figure 3 A-B) (PC1 score Kruskal-Wallis $\chi^2=11.99$, $df=5$; $p=0.034$). Of the DMRs involved, 12 overlapped with genes or putative promoters, and the remaining with distal inter-genic regions (Table S2a). Affected genes showing differential methylation between W and H1 included the transcription factor *SOX-13-like* (Pevny and Lovell-Badge 1997), the neuronal migration protein *doublecortin-like*, expressed in fish olfactory bulb and optic tectum (Tozzini, et al. 2012) and the small G protein signalling modulator 2-like, related to neural development in human and mice (Yang, et al. 2007). Some of the DMRs differentiating parental groups maintained the same methylation pattern in the offspring and may not have been erased during early reprogramming (Table S2b). Of these, two were maintained between W and H1, 167 DMRs between W and H2 (overlapping genes or promoters of 73 genes), and 105 DMRs between H1 and H2, affecting 24 genes (Figure S6). These results provide evidence that captive rearing induces rapid epigenetic (methylation) changes in salmon sperm, some of which can persist for at least one generation.

Variation in life history strategies (anadromous males versus mature resident males) may account for some observed methylation differences between the sperm of wild and hatchery males (Morán and Pérez-Figueroa 2011). However, some of these likely characterise hatchery rearing, as methylation signatures among the offspring of wild fish reared under hatchery conditions were more similar to those of hatchery fish than to their wild parents. Furthermore, differences between parental H1 and H2 fish were stronger than those between the wild and H1 groups. The regions affected include genes encoding for coiled coil-type and PH domain proteins that regulate intracellular signalling networks and gene expression (Kutzleb, et al. 1998) and changes to the PcG protein L3MBTL4 that regulates transcription and chromatin structure, and could underlie heritable changes in gene expression (Holoch and Margueron 2017). Also include the TATA-binding protein like (*tbp11*), related to spermiogenesis and embryonic development (Akhtar and Veenstra 2011), that displays differential methylation between hatchery and wild coho salmon as well (Le Luyer, et al. 2017).

In the parental groups, several regions differentially methylated between the W and H2 parents also differed between H1 and H2, with a high degree of conservation in their functions (i.e. ion transport, metabolic process, methylation; Figure S7). Even if the hatchery parents (H1 and H2) had been born and raised under the same hatchery conditions, their parents had spent different time in captivity (the mothers of the H2 group were born in the hatchery, whereas both parents of the H1 group had a reconditioned origin, i.e. were born in the wild). Thus, as the main difference between the H1 and H2 groups was the origin of their mothers, the methylation signature shared between W and H1 fish, that differed from H2 salmon, could be the result of their maternal environment (Marshall and Uller 2007). This supports a role for, potentially transgenerational, maternal effects during fish domestication (Christie, et al. 2016).

The sperm of parents and offspring displayed distinctive methylation profiles, suggesting that salmon PGCs could undergo a second reprogramming, as in mammals (Hackett and Surani 2013). However, some methylation marks can escape such resetting and result in epigenetic transgenerational inheritance, even if only for a small number of epialleles (Daxinger and Whitelaw 2012). Here, six of the common DMRs shared between W/H2 and H1/H2 were maintained in the next generation, including the transcription factor EB-like, expressed during embryo development (Lister, et al. 2011), the SPT20 protein, part of the SAGA complex (Nagy, et al. 2009), and the corticotropin-releasing factor receptor 1-like, involved in social stress and aggression (Backström, et al. 2015). This indicates a potential mechanism for heritable phenotypic responses to captive rearing, although further confirmation of the functional relevance of these methylation changes, including more populations, is warranted. Given the important contribution that mature male parr make to the reproduction of Atlantic salmon in the wild (Garcia-Vazquez, et al. 2001; Garant, et al. 2003), interbreeding of hatchery-reared mature parr with wild females could potentially result in epigenetic changes in wild populations.

Our findings suggest that at least part of the sperm epigenetic modifications associated with captive-rearing remain in the offspring beyond developmental reprogramming and could affect embryo fitness and performance. Hatchery-reared males could cause epigenetic introgression into wild populations after just one generation if they interbred with wild females, potentially disrupting local adaptation (Garcia de Leaniz, et al. 2007). The importance of this mechanism in adaptation can be better advanced by further analyses of the candidate genes/DMRs identified and by analysing the reversibility of these changes following the cessation of hatchery rearing.

Gene expression changes appear associated with captive-rearing (Christie, et al. 2016), but the role of epigenetics is only starting to be considered (Nätt, et al. 2012). Epigenetic modifications induced by captive-rearing can influence fitness in first-generation hatchery salmonids, but their inter- or transgenerational persistence has not been resolved (Le Luyer, et al. 2017). Here we provide the first evidence of stability of these epigenetic modifications between generations and suggest that sperm-mediated epigenetic introgression could explain the rapid changes experienced by wild fish when they interbreed with hatchery-reared fish (Araki, et al. 2009).

Material and methods

Sperm from three randomly chosen individuals from each of the male groups (W, H1 and H2) was used to fertilize batches of 300 ova pooled from three wild females (100 ova/female) (Supplementary methods). 125 µl of sperm from each male were pipetted onto Whatman FTA Classic cards for methylation analyses. The remaining sperm was used for sperm quality assessment (Caldeira, et al. 2018). Fertilised eggs from each of the parental crosses were reared under identical hatchery conditions for 8 months until maturity, when sperm from 8 random juvenile males from each of the offspring groups was analysed for DNA methylation.

DNA was extracted from 6 mm pieces of each FTA card with a GenSolve kit (GenTegra LLC, Pleasanton, USA), using QIAamp Blood Mini kit (QIAGEN Group) for DNA purification, and the re-extracted to increase DNA recovery.

Methylated DNA enrichment and analyses

DNA was fragmented to <1000 bp by incubating dsDNA with NEBNext® dsDNA Fragmentase® (New England BioLabs Inc.) for 30 min. Fragmented DNA was cleaned-up using QIAquick spin columns (QIAGEN Group). Methylated DNA was isolated from

fragmented whole genomic DNA using MethylMiner™ kit from Invitrogen (CA, USA). Methylated fragments were eluted using a high salinity elution buffer (2000 mM NaCl). As a control, gDNA was spiked with 1 pg of synthetic methylated and non-methylated DNA fragments (Methyl Miner kit, Invitrogen) before MBD-enrichment. Enriched (MBD2-captured) and unbound DNA fractions were amplified using specific primers for each spike-in control (Figure S1). Additional enrichment quality checks were performed (Figure S2).

Methylated-enriched DNA was quantified (Qubit), diluted to 0.2 ng ml⁻¹ and used for library preparation using Nextera-XT kit (Illumina Inc., CA, USA). Libraries were indexed for multiplexed paired-end sequencing (2x125 bp read length) on an Illumina HiSeq 2500 platform (Illumina Inc., CA, USA).

After quality check using FastQC/0.11.2. and adaptor trimming (Trimmomatic/0.33, Bolger et al., 2014), reads were aligned to the Atlantic salmon genome (ICSASG_v2) using Bowtie2 (Langmead and Salzberg 2012). MEDIPS (Lienhard, et al. 2013) was used for quality control, genomic coverage estimation and to detect pairwise DMRs among and between groups. We used MethylAction R (Bhasin, et al. 2015) to further assess sperm methylome differences among groups. In both cases, a window size of 50 bp, and q-value cutoffs of 0.05 after FDR multitest correction was applied (p value (Benjamini-Hochberg) <0.05). BAM files were imported to SeqMonk v1.37.1 (Andrews 2015) for visualization of mapped regions and PCA. To compare the results of MethylAction and MEDIPS, adjacent 50 bp significant windows were merged. BEDTools (Quinlan and Hall 2010) intersect was used to assess overlapping DMRS and enable the comparison between tools. Loci affected consisted of those with DMRs overlapping or neighbouring them.

BAM files the genome-wide MBD enrichment sequencing for a total of 9 parental male fish were processed using the AddOrReplaceReadGroups utility in Picard Toolkit (Picard 2018).

Indel targets were identified using Target Creator in GATK 4.0.11.0 (DePristo et al. 2011) and variants were exported into Golden Helix SNP & Variation Suite 8.3.3. SNPs were filtered using the LD pruning utility in Golden Helix using default options (Supplementary material). Genepop 4.7.0 (Rousset 2008) was used to test for global genotypic differentiation, using Fisher's exact test.

References

- Akhtar W, Veenstra GJC. 2011. TBP-related factors: a paradigm of diversity in transcription initiation. *Cell & bioscience* 1:23.
- Andrews S. 2015. A tool to visualise and analyse high throughput mapped sequence data. See <http://www.bioinformatics.babraham.ac.uk/projects/seqmonk>.
- Araki H, Cooper B, Blouin MS. 2009. Carry-over effect of captive breeding reduces reproductive fitness of wild-born descendants in the wild. *Biology Letters* 5:621-624.
- Araki H, Cooper B, Blouin MS. 2007. Genetic effects of captive breeding cause a rapid, cumulative fitness decline in the Wild. *Science* 318:100-103.
- Araki H, Schmid C. 2010. Is hatchery stocking a help or harm?: evidence, limitations and future directions in ecological and genetic surveys. *Aquaculture* 308:S2-S11.
- Backström T, Heynen M, Brännäs E, Nilsson J, Winberg S, Magnhagen C. 2015. Social stress effects on pigmentation and monoamines in Arctic charr. *Behavioural Brain Research* 291:103-107.
- Bhasin JM, Hu B, Ting AH. 2015. MethylAction: detecting differentially methylated regions that distinguish biological subtypes. *Nucleic Acids Research* 44:106-116.
- Bollati V, Baccarelli A. 2010. Environmental epigenetics. *Heredity* 105:105.
- Bolstad GH, Hindar K, Robertsen G, Jonsson B, Sægrov H, Diserud OH, Fiske P, Jensen AJ, Urdal K, Næsje TF. 2017. Gene flow from domesticated escapes alters the life history of wild Atlantic salmon. *Nature ecology & evolution* 1:0124.
- Bossdorf O, Richards C, Pigliucci M. 2008. Epigenetics for ecologists. *Ecology Letters* 11:106-115.
- Caldeira C, García-Molina A, Valverde A, Bompard D, Hassane M, Martin P, Soler C. 2018. Comparison of sperm motility subpopulation structure among wild anadromous and farmed

male Atlantic salmon (*Salmo salar*) parr using a CASA system. *Reproduction, Fertility and Development* 30:897-906.

Carneiro M, Rubin C-J, Di Palma F, Albert FW, Alföldi J, Barrio AM, Pielberg G, Rafati N, Sayyab S, Turner-Maier J. 2014. Rabbit genome analysis reveals a polygenic basis for phenotypic change during domestication. *Science* 345:1074-1079.

Charlesworth D, Barton NH, Charlesworth B. 2017. The sources of adaptive variation. *Proc. R. Soc. B* 284:20162864.

Christie MR, Marine ML, Fox SE, French RA, Blouin MS. 2016. A single generation of domestication heritably alters the expression of hundreds of genes. *Nature Communications* 7:10676.

Ciborowski K, Consuegra S, Garcia de Leaniz C, Wang J, Beaumont M, Jordan W. 2007. Stocking may increase mitochondrial DNA diversity but fails to halt the decline of endangered Atlantic salmon populations. *Conservation Genetics* 8:1355-1367.

Consuegra S, Verspoor E, Knox D, de Leaniz CG. 2005. Asymmetric gene flow and the evolutionary maintenance of genetic diversity in small, peripheral Atlantic salmon populations. *Conservation Genetics* 6:823-842.

Daxinger L, Whitelaw E. 2012. Understanding transgenerational epigenetic inheritance via the gametes in mammals. *Nature Reviews Genetics* 13:153.

Garant D, Fleming IA, Einum S, Bernatchez L. 2003. Alternative male life-history tactics as potential vehicles for speeding introgression of farm salmon traits into wild populations. *Ecology Letters* 6:541-549.

Garcia-Vazquez E, Moran P, Martinez J, Perez J, De Gaudemar B, Beall E. 2001. Alternative mating strategies in Atlantic salmon and brown trout. *Journal of Heredity* 92:146-149.

- Garcia de Leaniz C, Fleming I, Einum S, Verspoor E, Jordan W, Consuegra S, Aubin-Horth N, Lajus D, Letcher B, Youngson A. 2007. A critical review of adaptive genetic variation in Atlantic salmon: implications for conservation. *Biological Reviews* 82:173-211.
- Gavery MR, Nichols KM, Goetz GW, Middleton MA, Swanson P. 2018. Characterization of Genetic and Epigenetic Variation in Sperm and Red Blood Cells from Adult Hatchery and Natural-Origin Steelhead, *Oncorhynchus mykiss*. *G3: Genes, Genomes, Genetics* 8:3723-3736.
- Glover K, Pertoldi C, Besnier F, Wennevik V, Kent M, Skaala O. 2013. Atlantic salmon populations invaded by farmed escapees: quantifying genetic introgression with a Bayesian approach and SNPs. *BMC Genetics* 14:74.
- Hackett JA, Surani MA. 2013. DNA methylation dynamics during the mammalian life cycle. *Phil. Trans. R. Soc. B* 368:20110328.
- Holoch D, Margueron R. 2017. Polycomb Repressive Complex 2 Structure and Function. In: *Polycomb Group Proteins*: Elsevier. p. 191-224.
- Houde ALS, Fraser DJ, Hutchings JA. 2010. Reduced anti-predator responses in multi-generational hybrids of farmed and wild Atlantic salmon (*Salmo salar* L.). *Conservation Genetics* 11:785-794.
- Jiang L, Zhang J, Wang J-J, Wang L, Zhang L, Li G, Yang X, Ma X, Sun X, Cai J, et al. 2013. Sperm, but Not Oocyte, DNA Methylome Is Inherited by Zebrafish Early Embryos. *Cell* 153:773-784.
- Kostow K. 2009. Factors that contribute to the ecological risks of salmon and steelhead hatchery programs and some mitigating strategies. *Reviews in Fish Biology and Fisheries* 19:9-31.
- Kutzleb C, Sanders G, Yamamoto R, Wang X, Lichte B, Petrasch-Parwez E, Kilimann MW. 1998. Paralemmin, a prenyl-palmitoyl-anchored phosphoprotein abundant in neurons and

implicated in plasma membrane dynamics and cell process formation. *The Journal of cell biology* 143:795-813.

Langmead B, Salzberg SL. 2012. Fast gapped-read alignment with Bowtie 2. *Nature Methods* 9:357-359.

Le Luyer J, Laporte M, Beacham TD, Kaukinen KH, Withler RE, Leong JS, Rondeau EB, Koop BF, Bernatchez L. 2017. Parallel epigenetic modifications induced by hatchery rearing in a Pacific Salmon. *Proceedings of the National Academy of Sciences* 114:12964-12969.

Lienhard M, Grimm C, Morkel M, Herwig R, Chavez L. 2013. MEDIPS: genome-wide differential coverage analysis of sequencing data derived from DNA enrichment experiments. *Bioinformatics* 30:284-286.

Lister JA, Lane BM, Nguyen A, Lunney K. 2011. Embryonic expression of zebrafish MiT family genes *tfe3b*, *tfeb*, and *tfec*. *Developmental Dynamics* 240:2529-2538.

Mäkinen H, Vasemägi A, McGinnity P, Cross TF, Primmer CR. 2015. Population genomic analyses of early-phase Atlantic Salmon (*Salmo salar*) domestication/captive breeding. *Evolutionary Applications* 8:93-107.

Marshall DJ, Uller T. 2007. When is a maternal effect adaptive? *Oikos* 116:1957-1963.

McGinnity P, Prodohl P, Ferguson A, Hynes R, Maoileidigh NA, Baker N, Cotter D, O'Hea B, Cooke D, Rogan G, et al. 2003. Fitness reduction and potential extinction of wild populations of Atlantic salmon, *Salmo salar*, as a result of interactions with escaped farm salmon. *Proceedings of the Royal Society of London. Series B: Biological Sciences* 270:2443-2450.

Morán P, Pérez-Figueroa A. 2011. Methylation changes associated with early maturation stages in the Atlantic salmon. *BMC Genetics* 12:86.

Nagy Z, Riss A, Romier C, Le Guezennec X, Dongre AR, Orpinell M, Han J, Stunnenberg H, Tora L. 2009. The human SPT20-containing SAGA complex plays a direct role in the

regulation of endoplasmic reticulum stress-induced genes. *Molecular and Cellular Biology* 29:1649-1660.

Nätt D, Rubin C-J, Wright D, Johnsson M, Beltéky J, Andersson L, Jensen P. 2012. Heritable genome-wide variation of gene expression and promoter methylation between wild and domesticated chickens. *BMC Genomics* 13:59.

Ozerov M, Vasemägi A, Wennevik V, Diaz-Fernandez R, Kent M, Gilbey J, Prusov S, Niemelä E, Vähä J-P. 2013. Finding markers that make a difference: DNA pooling and SNP-arrays identify population informative markers for genetic stock identification.

Pevny LH, Lovell-Badge R. 1997. Sox genes find their feet. *Current Opinion in Genetics & Development* 7:338-344.

Picard T. 2018. <http://broadinstitute.github.io/picard/> Broad Institute.

Rousset F. 2008. GENEPOP/007: a complete re-implementation of the GENEPOP software for Windows and Linux. *Mol Ecol Resour* 8:103-106.

Rubin C-J, Zody MC, Eriksson J, Meadows JR, Sherwood E, Webster MT, Jiang L, Ingman M, Sharpe T, Ka S. 2010. Whole-genome resequencing reveals loci under selection during chicken domestication. *Nature* 464:587.

Stringwell R, Lock A, Stutchbury CJ, Baggett E, Taylor J, Gough PJ, Garcia de Leaniz C. 2014. Maladaptation and phenotypic mismatch in hatchery-reared Atlantic salmon *Salmo salar* released in the wild. *Journal of Fish Biology* 85:1927–1945.

Theriault V, Moyer GR, Jackson LS, Blouin MS, Banks MA. 2011. Reduced reproductive success of hatchery coho salmon in the wild: insights into most likely mechanisms. *Molecular Ecology* 20:1860-1869.

Tozzini ET, Baumgart M, Battistoni G, Cellerino A. 2012. Adult neurogenesis in the short-lived teleost *Nothobranchius furzeri*: localization of neurogenic niches, molecular characterization and effects of aging. *Aging cell* 11:241-251.

Wilkinson S, Lu ZH, Megens H-J, Archibald AL, Haley C, Jackson IJ, Groenen MA, Crooijmans RP, Ogden R, Wiener P. 2013. Signatures of diversifying selection in European pig breeds. *PLoS genetics* 9:e1003453.

Yang H, Sasaki T, Minoshima S, Shimizu N. 2007. Identification of three novel proteins (SGSM1, 2, 3) which modulate small G protein (RAP and RAB)-mediated signaling pathway. *Genomics* 90:249-260.

Youngson NA, Whitelaw E. 2008. Transgenerational epigenetic effects. *Annual Review of Genomics and Human Genetics* 9:233-257.

Data accessibility. Sequences have been deposited in SRA Knowledge Base under accession numbers SRR8296345- SRR8296361. DMR details are included in Supplementary material as well as detailed protocols. Additional sequencing results will be deposited in Dryad after manuscript acceptance and are fully available from the authors for review upon request as could not be directly uploaded (size >300 MB).

Competing interests. The authors declare no competing interests.

Acknowledgements. This work was funded by a BBSRC-NERC Aquaculture grant (BB/M026671/1). We are grateful to Patrick Martin from the Conservatoire National du Saumon Sauvage, for his help and support in designing the experiments and insightful comments on the manuscript.

Author contributions. SC & CGL designed the study; DRB carried out the sampling and analyses; EV, CGL, SC & MC obtained the funding; HS carried out the SNPs analyses; all authors contributed to the interpretation of the results; CGL & EV contributed to the writing of the paper which was initially drafted by DRB & SC and checked and approved by all the authors.

Figure legends

Figure 1. Outline of the experimental design. Parental origin of wild (W) and hatchery (H1 and H2) groups and their offspring. Wild adult salmon were captured from the river Allier on their return to the spawning grounds, H1 salmon originated from crosses between re-conditioned males and females (wild origin fish recovered and maintained in the hatchery for more than 1 year after spawning) and H2 salmon originated from crosses between re-conditioned males and hatchery-born females (details in supplementary material). Sperm of the three groups of parents (W, H1 and H2) was used to fertilise the eggs of three wild females to create the offspring. Sperm sampling points for methylation are indicated by a red asterisk.

Figure 2. Differentially methylated regions (DMRs). (A) DMRs found using MEDIPS showing unique and shared DMRs among groups comparisons. (B) DMRs found using Methylation. *Table:* Number of DMRs detected for all possible patterns of hyper- (black squares) and hypomethylation (white squares). (**) Patterns with FDR <0.01; (*) Patterns with FDR <0.1. ‘Frequent’ DMRs correspond to those where the methylation status of all the samples within a group agrees (3/3). *Heatmap:* Heatmap of normalized read count distributions for all ‘frequent’ DMRs detected. Columns represent samples, and rows DMRs.

Figure 3. Clustering of parents and offspring targeting those regions that were DM between hatchery and wild individuals in the parental group (‘hatchery reared fish distinctive signatures’). (A) PCA using normalized total read counts of 1000 bp sliding windows genome wide for the target regions. (B) Clustering and Heatmap of normalized read counts (log transformed) of ‘hatchery reared fish distinctive signatures’. Columns represent samples, and rows DMRs (the name of the closest/overlapping loci was assigned to each DMR).

Figure 1.

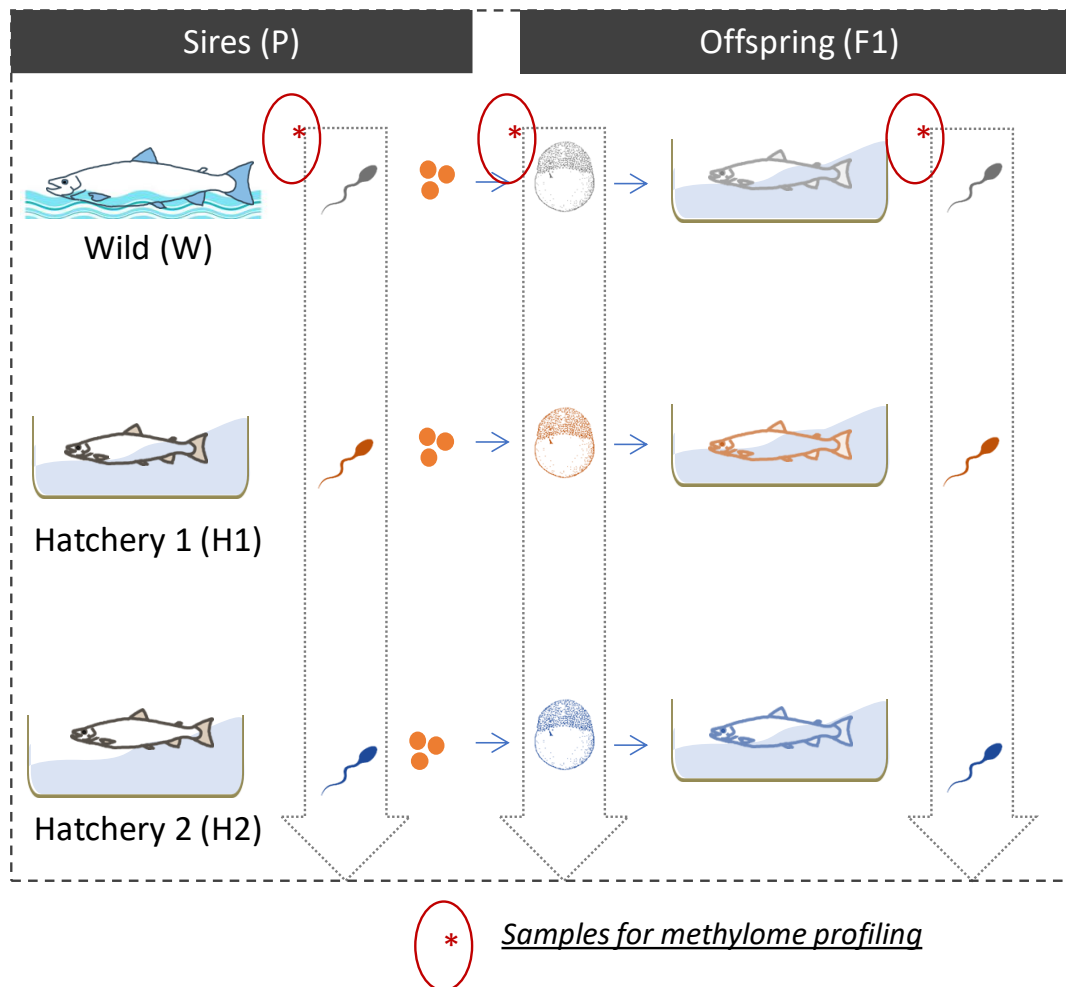
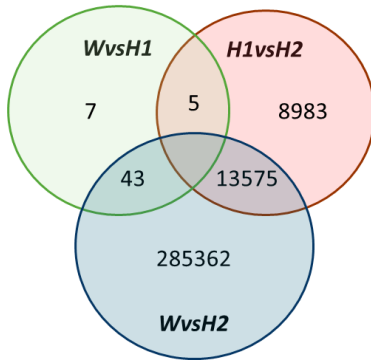


Figure 2.

A



B

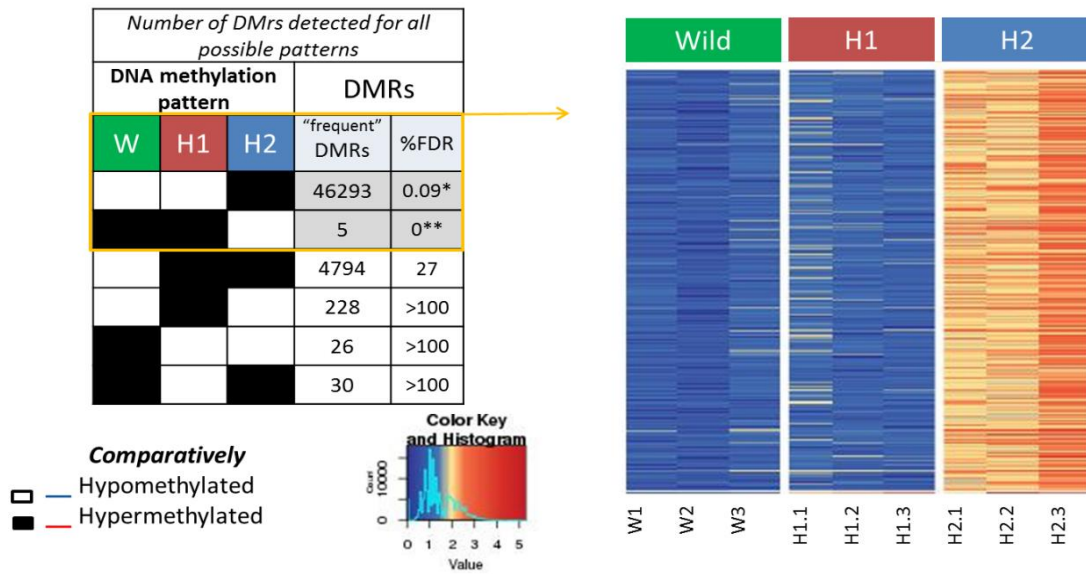


Figure 3.

