

UHI Research Database pdf download summary

Fields with no recent legume cultivation have sufficient nitrogen-fixing rhizobia for crops of faba bean (*Vicia faba* L.)

Maluk, Marta; Ferrando-Molina, Francesc; Lopez del Egado, Laura; Langarica-Fuentes, Adrian; Yohannes, Genet Gebre; Young, Mark W.; Martin, Peter; Gantlett, Richard; Kenicer, Greg; Hawes, Cathy; Begg, Graham S.; Quilliam, Richard S.; Squire, Geoffrey R.; Young, J. Peter W.; Iannetta, Pietro P.M.; James, Euan K.

Published in:
Plant and Soil

Publication date:
2022

Publisher rights:
© The Author(s) 2021

The re-use license for this item is:
CC BY

The Document Version you have downloaded here is:
Publisher's PDF, also known as Version of record

The final published version is available direct from the publisher website at:
[10.1007/s11104-021-05246-8](https://doi.org/10.1007/s11104-021-05246-8)

[Link to author version on UHI Research Database](#)

Citation for published version (APA):

Maluk, M., Ferrando-Molina, F., Lopez del Egado, L., Langarica-Fuentes, A., Yohannes, G. G., Young, M. W., Martin, P., Gantlett, R., Kenicer, G., Hawes, C., Begg, G. S., Quilliam, R. S., Squire, G. R., Young, J. P. W., Iannetta, P. P. M., & James, E. K. (2022). Fields with no recent legume cultivation have sufficient nitrogen-fixing rhizobia for crops of faba bean (*Vicia faba* L.). *Plant and Soil*, 472(1-2), 345-368. <https://doi.org/10.1007/s11104-021-05246-8>

General rights

Copyright and moral rights for the publications made accessible in the UHI Research Database are retained by the authors and/or other copyright owners and it is a condition of accessing publications that users recognise and abide by the legal requirements associated with these rights:

- 1) Users may download and print one copy of any publication from the UHI Research Database for the purpose of private study or research.
- 2) You may not further distribute the material or use it for any profit-making activity or commercial gain
- 3) You may freely distribute the URL identifying the publication in the UHI Research Database

Take down policy

If you believe that this document breaches copyright please contact us at RO@uhi.ac.uk providing details; we will remove access to the work immediately and investigate your claim.



Fields with no recent legume cultivation have sufficient nitrogen-fixing rhizobia for crops of faba bean (*Vicia faba* L.)

Marta Maluk · Francesc Ferrando-Molina · Laura Lopez del Egado · Adrian Langarica-Fuentes · Genet Gebre Yohannes · Mark W. Young · Peter Martin · Richard Gantlett · Greg Kenicer · Cathy Hawes · Graham S. Begg · Richard S. Quilliam · Geoffrey R. Squire · J. Peter W. Young · Pietro P. M. Iannetta · Euan K. James

Received: 23 March 2021 / Accepted: 24 November 2021 / Published online: 20 January 2022
© The Author(s) 2021

Abstract

Purpose (1) To assess the biological N fixation (BNF) potential of varieties of faba bean (*Vicia faba* L.) cropped with or without compost in an experimental field-scale rotation with no recent history of legumes, (2) to enumerate soil populations of *Rhizobium leguminosarum* sv. *viciae* (*Rlv*), and to genetically characterize the nodulating *Rlv* strains, (3) compare BNF with other sites in Britain.

Methods BNF was evaluated from 2012 to 2015 using ^{15}N natural abundance. Treatments were either PK fertilizer or compost. Soil rhizobial populations were determined using qPCR, the symbiotic rhizobia genotyped (16 S rRNA, *nodA* and *nodD* genes), and their BNF capacity assessed *ex situ*. The reliance of legumes on BNF at other British sites was estimated in a single season, and their nodulating symbionts examined.

Results Faba bean obtained most of its N through BNF (>80%) regardless of variety or year. N-accumulation by cvs Babylon and Boxer increased with compost treatment in 2014/2015. Rhizobial populations were c. 10^5 – 10^6 *Rlv* cells g^{-1} soil regardless of field or treatment. 157 *Rlv* microsymbionts grouped

Responsible Editor: Katharina Pawlowski

Supplementary Information The online version contains supplementary material available at <https://doi.org/10.1007/s11104-021-05246-8>.

M. Maluk · L. Lopez del Egado · M. W. Young · C. Hawes · G. S. Begg · G. R. Squire · P. P. M. Iannetta · E. K. James (✉)
Ecological Sciences, The James Hutton Institute, Invergowrie, DD2 5DA Dundee, UK
e-mail: Euan.James@hutton.ac.uk

F. Ferrando-Molina · R. S. Quilliam
Biological and Environmental Sciences, University of Stirling, FK9 4LA Stirling, UK

Present Address:
L. Lopez del Egado
Seed Crops & Technology Flowers, Syngenta Flowers B.V, Westeinde 62, 1601 BK Enkhuizen, The Netherlands

A. Langarica-Fuentes
Applied Geosciences, Universität Tübingen, Schnarrenbergstr. 94-96, 72076 Tübingen, Germany

G. G. Yohannes
Department of Microbial, Cellular and Molecular Biology, Faculty of Life Science, Addis Ababa University, P.O. Box 1176, Addis Ababa, Ethiopia

P. Martin
University of the Highlands and Islands, Orkney College UHI, Kirkwall KW15 1LX, UK

R. Gantlett
Soil Research Centre, School of Agriculture, Policy and Development, University of Reading, Whiteknights, Reading RG6 6AR, UK

G. Kenicer
Royal Botanical Garden Edinburgh, 20A Inverleith Row, Edinburgh EH3 5LR, UK

into two large *nodAD* clades; one mainly from *V. faba*, and the other from various legumes. All isolates nodulated, and some performed better than commercial inoculant strains.

Conclusions Faba bean can provide most of its nitrogen through BNF and leave economically valuable residual N for subsequent crops. Recent legume cropping in northern Europe is not essential for effective nodulation: rhizobia may persist in a range of farmland locations. Nevertheless, there is the potential to apply elite rhizobial strains as inoculants in some soils.

Keywords *Vicia faba* L. · Green waste compost · ^{15}N natural abundance · Nitrogen fixation · *Rhizobium* · qPCR · *nodD*

Abbreviations

Rlv	<i>Rhizobium leguminosarum</i> sv. <i>viciae</i>
CSC	Centre for Sustainable Cropping
qPCR	quantitative Polymerase Chain Reaction
BNF	Biological Nitrogen Fixation
GHG	Greenhouse gases
%Ndfa	Proportion of Nitrogen derived from air
bp	base pair
REML	Restricted Maximum Likelihood
SDW	Sterile Distilled Water

Introduction

Nodulated legumes are the largest contributors of biologically fixed nitrogen (N) to both natural terrestrial and agricultural environments and are a key component of sustainable agriculture (Cleveland et al. 1999; Jensen et al. 2012; Peoples et al. 2009; Udvardi et al. 2021; Unkovich et al. 2008). The root nodulating symbioses that they form with a diverse range of soil bacteria, collectively termed “rhizobia” (De Meyer et al. 2011; Gyaneshwar et al. 2011; Peix et al. 2015), are capable of fixing more than 200 kg N ha⁻¹ yr⁻¹ in agricultural systems in both tropical (Alves et al. 2003) and temperate regions (Carlsson and Huss-Danell 2003; Iannetta et al. 2016; Jensen et al. 2010). These systems include legumes grown for their high protein grains (for both human and

animal consumption), as animal forage and fodder, and as “green manures”, intercrops and understoreys.

If appropriately managed, legume crops can achieve high yields without applications of mineral N-containing fertiliser; in addition, they have the potential to contribute substantial amounts of fixed N to the succeeding non-legume crop (e.g. in rotations or crop sequences) or directly when used as green manures, intercrops or understoreys. While legumes are increasingly being used in tropical countries, e.g. soybean in Brazil (Alves et al. 2003), their use in northern European agriculture has greatly declined over the last 150 years (Squire et al. 2019). Since the mid-1900s, northern European crop systems have gained most of their N from synthetic fertilisers manufactured using the Haber-Bosch process, which has subsequently replaced the role of N-fixing legumes in cereal rotations and pastures. However, it is also now apparent that overuse of industrially-produced N-containing fertilisers can lead to eutrophication of rivers and the pollution of groundwater, and following denitrification can contribute substantial amounts of greenhouse gases (GHG) such as N₂O (Jensen et al. 2012). Given the likelihood of further statutory curbs on the use of N-fertilisers, and growing acceptance that locally-grown pulses deliver improvements to human and animal nutrition with reduced economic and environmental costs compared to the importation of legume grain (e.g. of soybean from the Americas), the demand for N-fixing legumes in northern European cropping systems is expected to increase (Iannetta et al. 2016).

The most economically important grain legumes (pulses) in the UK and northern Europe in general are pea (*Pisum sativum* L.) and faba bean (*Vicia faba* L.), which are cropped for their high protein grains. Faba bean is capable of high biological N fixation (BNF) in many parts of the world, including Australia and Canada (Denton et al. 2013; Hosain et al. 2016; Unkovich et al. 2010; Van Zwieten et al. 2015), but also in Europe, where ^{15}N -based field studies have indicated that it can fix between 73 and 335 kg shoot N ha⁻¹ yr⁻¹ (Giambalvo et al. 2012; Jensen et al. 2010; López-Bellido et al. 2006). However, there have been no studies to quantify BNF in the cooler, wetter climates of the British Isles since Sprent et al. (1977) estimated very large inputs of fixed N (600 kg ha⁻¹ yr⁻¹) from faba bean grown in East Scotland (UK) using the acetylene reduction

J. P. W. Young
Department of Biology, University of York,
York YO10 5DD, UK

assay. Faba bean varieties, farmers' practices and management have changed considerably over the last 40 years, and so these early BNF estimates may not reflect the position in commercial agriculture today. Even less is known about BNF by pea in the British Isles, although it is known to fix large amounts of N (albeit less than faba bean) in other parts of the world (Hauggaard-Nielsen et al. 2010; Hossain et al. 2016; Jensen 1986; 1987; Unkovich et al. 2010; Unkovich et al. 2008).

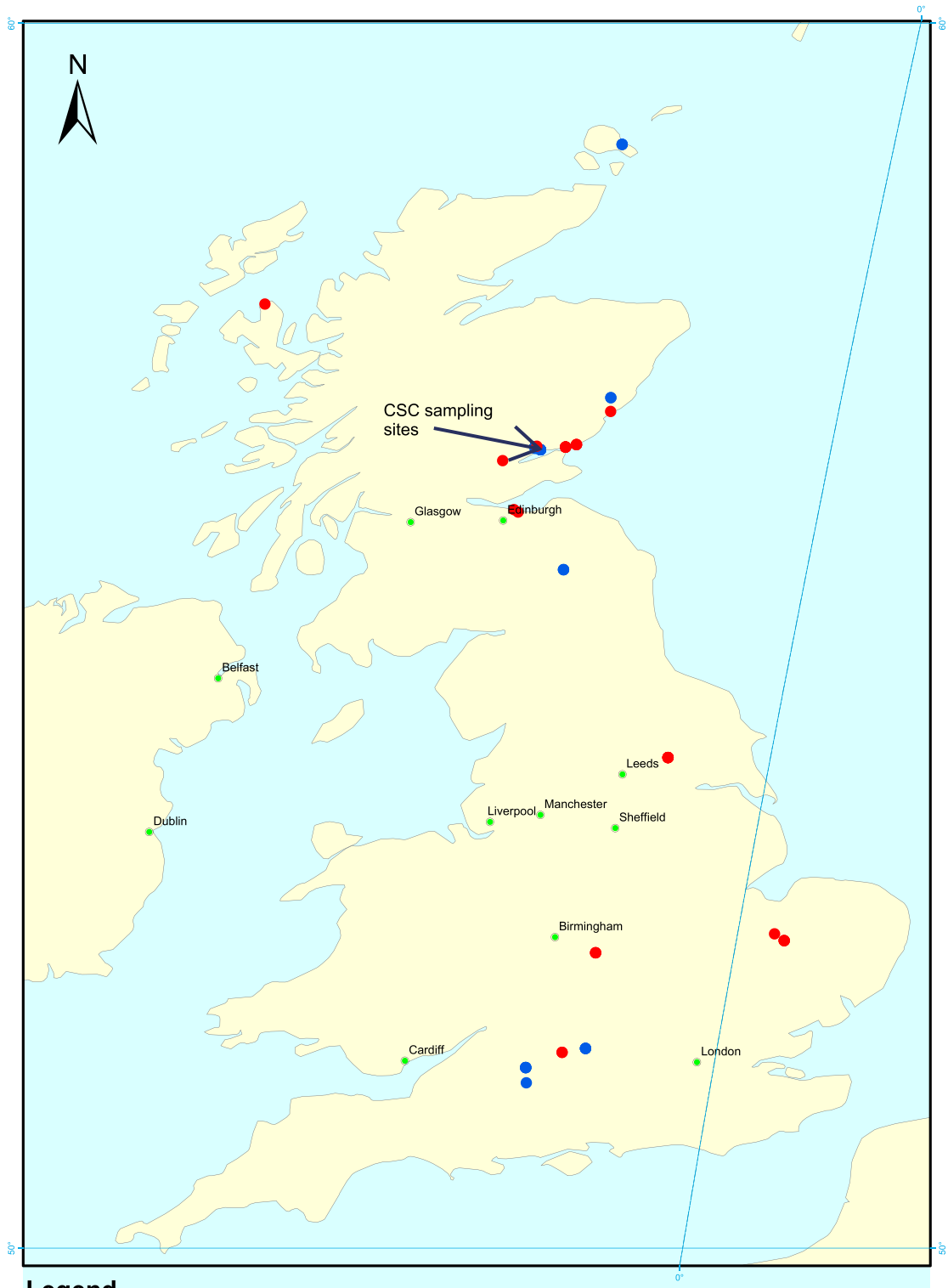
Two critical factors need to be resolved before any programme for legume expansion can be put in place. First, in general, legumes will only nodulate and fix N if they need to, i.e. if the soil N status is sufficiently low (Jensen et al. 2010; Peoples et al. 1991; Unkovich et al. 2008). However, northern European soils are usually already enriched in N because of the intensive use of fertilisers typical of commercial arable rotations, and so in order to induce legumes to nodulate and fix N, concentrations of soil N may need to be reduced, for example by the prior use of an N-demanding crop (Jensen et al. 2010; Van Zwieten et al. 2015). Second, suitable bacteria need to be present in the soil. Faba bean, pea and lentil (*Lens culinaris* Medik.) are all nodulated by the common soil bacterium *Rhizobium leguminosarum* sv. *viciae* (*Rlv*) (Laguerre et al. 2003), which also nodulates several native European legumes in the genera *Lathyrus* and *Vicia* (Mutch and Young 2004). Populations of rhizobia are adversely affected by high soil N, but also by the absence of legume host crops over a prolonged period (Jensen et al. 2010). This means that a legume crop may have reduced nodulation and N-fixation capacity (and may even fail altogether) if care is not taken to ensure that an adequately high population of suitable rhizobia is present in the soil. In studies of UK soils, Nutman and Hearne (1979) reported >1000-fold reductions in *Rlv* populations under continual fallow or cereal cropping, and Sorwli and Mytton (1986) suggested that BNF by faba bean might be limited by low rhizobial populations and/or ineffective *Rlv* genotypes. Similarly, in France, Depret et al. (2004) concluded that long-term cropping of cereals, particularly maize (*Zea mays* L.), resulted in a marked decrease in the diversity of *Rlv*. More recently, Walker and Watson (2011) have recommended that pulse crops in the UK are inoculated with *Rlv* as part

of a strategy to overcome “yield instability” brought about by reductions in *Rlv* populations as a consequence of the long-term absence of legumes in many soils.

The opportunity to test the overarching hypothesis that the prolonged absence of legume cropping results in reductions in soil *Rlv* populations, and hence impacts negatively on yields by legume crops that are largely dependent on BNF, arose at the Centre for Sustainable Cropping (CSC). The CSC is a long-term experimental platform close to Dundee, Scotland, with no recent history of legume cropping. Furthermore, it was established with the primary aim of testing whether yields obtained by conventional arable management comprising standard local fertiliser inputs can be maintained or even bettered under a low-input integrated system comprising inputs of green waste compost only (Hawes et al. 2018). Therefore, it also allowed for testing the additional hypothesis that applications of compost can help maintain (and even enhance) soil *Rlv* populations, and hence legume BNF and grain yields.

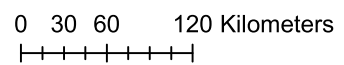
In this context, there were five aims to the present study:

1. To determine the contribution of BNF to several varieties of faba bean in a four-year field-scale arable rotation in soils amended with or without compost.
2. To estimate populations of *Rlv* in the faba bean-cropped soils using a qPCR approach based on 16S rRNA and *nodD* primers.
3. Considering the prolonged absence of legume cropping at the site, to determine the potential origins of the *Rlv* strains nodulating the faba bean by comparing them genetically with strains isolated from neighbouring domesticated and wild relatives of faba bean in the genera *Vicia*, *Pisum*, *Lathyrus* and *Lens*.
4. To assess the plant growth-promoting performance of the rhizobial isolates.
5. To assess the degree to which the N-needs of pea and faba bean crops in other parts of Britain are met by BNF, and to use these crops as additional sources of genetically and functionally diverse *Rlv* genotypes to compare with those isolated from the main study site and its immediate environs.



Legend

- Legume nodule sampling sites
- BNF measuring and legume nodule sampling sites



◀**Fig. 1** A map of the British Isles showing the location of the legume nodule sampling sites (red spots) and sites where biological N fixation (BNF) was also measured (blue spots). Major cities are marked in green. The CSC is indicated by an arrow

Materials and methods

Experimental design of a 4-year experimental crop sequence at the CSC incorporating faba bean

Faba bean was sampled annually from 2012 to 2015 at the CSC field-scale experimental platform in Balruddery Farm, Dundee, North-East Scotland, UK (56.48 lat, -3.13 long). The location of the CSC is indicated in Fig. 1, along with the other sites where BNF was assessed and/or rhizobia were sampled (Table S1). The fields comprising the CSC were not cropped with legumes for at least 50 years prior to the onset of the experimental rotation in 2011; they provided grass for grazing and/or cattle fodder until the late 1990s, and thereafter were part of an arable rotation mainly comprising winter cereals. The CSC experimental platform is a 42 ha contiguous block of six arable fields based on a six year rotation of the commonly grown crops in the region: potatoes (*Solanum tuberosum* L.), winter wheat (*Triticum aestivum* L.), winter barley (*Hordeum vulgare* L.), winter oilseed rape (*Brassica napus* L.), spring sown faba bean and spring barley. It was established as a long-term field platform in which conventional arable management is being compared with a low-input, integrated cropping system designed with the goal to maintain yields whilst enhancing biodiversity and minimizing environmental impact. More details about the CSC can be found in Hawes et al. (2018) and Freitag et al. (2018), and at <https://csc.hutton.ac.uk>. The soil N-status of each field is shown in Table 1 along with the non-legume crop that preceded faba bean. Monthly average temperature and precipitation during the 2012–2015 growing seasons are shown in Fig. S1.

The experimental crop sequence was conducted on four of the six fields comprising the CSC; each 6–7 ha field was divided in half: one half (labelled conventional) was treated with a standard application of fertilizer currently used in east Scotland (i.e. PK, but not N), while the other half (labelled integrated) received a reduced level of PK fertilizer, but was also treated with green waste compost containing 1.35% N and

16.01% C, which was applied annually before seed sowing at a rate of 35 t ha⁻¹ (Table 1). In each season, four to five varieties of faba bean were sown in 18 m wide strips in each field half at a sowing density of 210–320 kg ha⁻¹, depending on variety. Although some of the varieties changed over the four seasons owing to difficulties in obtaining sufficient quantities of seed, two of them (cvs Fuego and Pyramid) were sown in each year from 2012 to 2015.

Calculation of BNF using the ¹⁵N natural abundance technique

Biomass and BNF measurements were undertaken at early to mid-podfill, when grain legume BNF is maximal (i.e. early to mid-podfill; Jensen et al. 2010; Rose et al. 2018; Unkovich et al. 2008), which is normally late July/early August in Scotland. Faba bean plants in 0.5 m² sampling points, (five points per strip), were harvested and the dry biomass of the entire aerial parts (stems, leaves and pods) was weighed for an estimate of above-ground biomass per hectare (Freitag et al. 2018; Hawes et al. 2018). A single whole faba bean plant with an intact nodulated root system was sampled from the edge of each sampling point (Freitag et al. 2018; Hawes et al. 2018). Adjacent non-legume dicot weeds or non-legume crop volunteers were sampled as non-N-fixing reference plants for ¹⁵N natural abundance assays (Carlsson and Huss-Danell 2014) (listed in Table S2); at least one reference plant was sampled from each of the five sampling points, so that each strip was represented by five faba bean plants and five references. These were set aside for %N and ¹⁵N analysis (see next section). The crop was harvested according to standard farm practice in September or October, depending on the weather. The dry weight of grain per 18 m-wide strip was converted to yield in t ha⁻¹ (taking into account a standard 15% moisture content).

The five individual faba bean plants per strip were divided into shoots, roots and nodules, which were dried at 60 °C, weighed and milled to a fine powder. The same was done with the aerial parts of the reference plants. A sub-sample of each plant was analysed using an elemental analyser linked to a mass spectrometer to determine the %N and ¹⁵N contents, respectively. Samples (0.5 mg) were weighed into tin capsules and analysed for the ¹⁵N isotopic composition using an automated nitrogen-carbon elemental

Table 1 Soil Nitrogen levels and additions in fields used for growing faba bean in the four-year cropping sequence (2012–2015)

Field	Plant available N* at start of growing season (kg ha ⁻¹)	Added plant available N (kg ha ⁻¹)	Crop in preceding season	Added plant available N in preceding season (kg ha ⁻¹)
Estate (2012)				
Conventional	51.7	0	Winter barley	270.0
Integrated	36.7	5.38	Winter barley	202.5
Kennels (2013)				
Conventional	42.7	0	Winter barley	270.0
Integrated	44.5	5.38	Winter barley	202.5
Middle East (2014)				
Conventional	14.4	0	Winter wheat	270.0
Integrated	27.1	5.38	Winter wheat	202.5
Den South (2015)				
Conventional	26.4	0	Winter wheat	270.0
Integrated	34.3	5.38	Winter wheat	202.5

*NO₃⁻ + NH₄⁺. Sampling depth was 20 cm, and soil bulk density = 1.3 g cm⁻³

The conventional field halves received a standard (0–20–30) dressing of PK fertiliser (200 kg ha⁻¹), whereas the integrated halves were treated with green waste compost plus (0–20–30) PK fertiliser (150 kg ha⁻¹). Details are given in the Materials and Methods

analyser (ANCA) coupled to a 20/20 isotope ratio mass spectrometer (both SerCon Ltd., Crewe, UK). The total N content of the faba bean plants was calculated by multiplying the dry biomass of their shoots by their %N. The proportion of faba bean N derived from atmospheric N₂ (%Nd_{fa}) was calculated by comparing the ¹⁵N natural abundance (expressed as δ¹⁵N or parts per thousand [‰] relative to the ¹⁵N composition of atmospheric N₂) of the faba bean shoot N (δ¹⁵N legume) to the δ¹⁵N of the non-N₂-fixing reference plants (which are assumed to reflect the δ¹⁵N of the plant-available soil N [δ¹⁵N soil]) using Eq. (1):

$$\%Nd_{fa} = 100 \times (\delta^{15}N_{soil} - \delta^{15}N_{legume}) / (\delta^{15}N_{soil} - B) \quad (1)$$

where *B* represents the δ¹⁵N of faba bean shoots grown entirely reliant upon BNF for growth (Unkovich et al. 2008).

Generation of *B*-values for all seven of the faba bean varieties sown in the CSC (cvs, Babylon, Ben, Boxer, Fanfare, Fuego, Pyramid and Tattoo), and for pea cv. Corus was performed according to Unkovich et al. (2008) and Burchill et al. (2014). Plants were grown in a 1:1 (v/v) mixture of autoclaved perlite and sand in 10 L pots in an unheated glasshouse from March to June. The pots were inoculated with a liquid culture of a mixture of *Rlv* isolates from the

CSC (see next section), and were fed weekly with an N-free nutrient solution (Burchill et al. 2014), and watered daily or as required. As recommended by Rose et al. (2018), plants were harvested at early- to mid-podfill stage to match the plants sampled in the field, and δ¹⁵N values were obtained from dried aerial parts as described above. *B*-values were also obtained for each year of the trial to ensure internal consistency in the data from the faba bean, reference plants, and *B*-values used to estimate %Nd_{fa} for each season (Table S3).

The amount of N fixed was then calculated from estimates of %Nd_{fa}, shoot dry biomass and N content (%N) using Eqs. (2) and (3):

$$\text{Legume shoot N} = \%N / 100 \times (\text{legume shoot dry matter}) \quad (2)$$

$$\text{Amount shoot N fixed} = \%Nd_{fa} / 100 \times (\text{legume shoot N}) \quad (3)$$

Estimating total crop N and residual N after grain harvest

Shoot-based calculations of N₂ fixation underestimate total inputs of fixed N since substantial amounts of legume N can also be associated with, or released and derived from, the nodulated roots (Liu et al. 2019;

Unkovich et al. 2010). In the case of field-grown faba bean, below-ground pools of N have been reported to represent between 24 and 40% of the total plant N (Unkovich et al. 2010). Given the well-known difficulties in obtaining accurate below ground crop N data (Liu et al. 2019; Unkovich et al. 2010), the total amounts of N₂ fixed by the faba bean at the CSC at early to mid-podfill were estimated by multiplying the shoot values calculated using Eq. (3) by a factor of 1.52 to include the N-content of the nodulated roots (Unkovich et al. 2010).

Total crop N at harvest was calculated from the grain yield, and this was then used to estimate the residual N. Grain was harvested from each 18 m strip using a standard combine harvester; sub-samples of dried grain were analysed for their %N using an elemental analyser as described above, and the total grain N was calculated by multiplying the dried grain mass by %N. A mean harvest index (HI) value of 0.43 was calculated from the CSC faba bean crops in 2012 and 2013, a value which is typical for faba bean in northern Europe (Jensen et al. 2010; Sprent et al. 1977); this was used to calculate the dry biomass of the aerial parts of the crop comprising the stover plus the grains. An estimate of the total crop dry biomass (TCB) including the underground parts (roots and nodules) was then obtained by multiplying the dry biomass of the aerial parts by 1.52 to include the N-content of the nodulated roots (Unkovich et al. 2010) using Eq. (4). The residual N (i.e. the N content of the stover plus roots) was estimated by subtracting the dry grain weight from the TCB and multiplying the resulting value by 0.6%, which was the average %N across all varieties for the residual dry matter in the plots at the CSC in 2013 (5):

$$\text{Total crop dry biomass (TCB)} = (\text{dry grain weight}/0.43) \times 1.52 \quad (4)$$

$$\text{Legume residue N} = (\text{TCB} - \text{dry grain weight}) \times 0.006 \quad (5)$$

Assessment of faba bean nodulation

To quantify nodulation at the CSC, nodules were removed from the root systems of the plants used for obtaining $\delta^{15}\text{N}$ values at mid-podfill stage; nodule dry weights were obtained by drying overnight at 70 °C, and expressed as nodule biomass per plant. However, because it is difficult to excavate an intact root system

from field-grown faba bean plants these data are only representative of the crown nodulation zone, which extends ca. 15 cm down the tap root.

Quantification of rhizobia in soils using a real-time qPCR assay

A principal aim of the study was to assess faba bean BNF at the CSC with reference to rhizobial soil populations in order to determine if the prolonged absence of legume cropping had a negative impact on these populations, and hence if it had a follow-on impact on BNF. The impact of compost application on rhizobial populations under the integrated treatment was also investigated. To this end, a relative real-time PCR method using an artificial reference “spike” (Daniell et al. 2012) and 16S rRNA and *nodD* gene primers (Macdonald et al. 2011) was employed to estimate *Rhizobium leguminosarum* 16S rRNA and *Rhizobium leguminosarum* sv. *viciae nodD* gene copy numbers in the four faba bean-cropped fields from 2012 to 2015.

Soil samples from 12 permanent GPS locations across faba bean fields were collected every March (before crop sowing) during 2012–2015 from the CSC farm platform as described by Hawes et al. (2018). In short, at each sample position, 1.5 L of soil was taken to a depth of 0.15 m using a soil auger or trowel, weighed and passed through a sieve with a mesh size of 10 mm. Soil samples were dried overnight at 70 °C to determine their moisture content. Prior to drying, small sub-samples of the fresh soil (2 mL in volume) were flash frozen in liquid N₂ and stored at -80 °C for subsequent molecular analyses.

DNA was extracted from ~0.25 g soil samples using the DNeasy PowerSoil Kit (Qiagen, Hilden, Germany) following the manufacturer’s instructions, using a 2 min bead-beating step (Retsch MM300, Haan, Germany) at a frequency of 30 beats s⁻¹. A 194 bp (bp) fragment of the mutated 16S rRNA gene from *Escherichia coli*, which is routinely used as an artificial reference spike to account for DNA losses during DNA extraction from the soil (Daniell et al. 2012), was added to each soil sample at a concentration of 10⁹ copies per sample prior to DNA extraction.

The wild-type calibrator controls were generated by PCR amplification of 16S rRNA and *nodD* gene fragments from soil DNA extracts using the primer

sets F979+R1264 and F88+R443, respectively (Macdonald et al. 2011). Briefly, 1 μ L of soil DNA extract was used as template for PCR in a final reaction volume of 50 μ L containing: 1.25 U GoTaq® G2 DNA polymerase (Promega, Southampton, UK), 0.4 μ M of each primer, 0.2 mM of each nucleotide and 1x clear GoTaq® G2 Buffer (Promega, Southampton, UK). All reactions were performed on G-Storm GS1 thermal cyclers (GRI Ltd, Braintree, UK), with the following cycling conditions: initial denaturation at 95 °C for 2 min; 35 cycles of 95 °C for 1.5 min, 58 °C for 1 min and 72 °C for 1 min; final extension of 72 °C for 15 min. PCR products were gel purified using the MinElute Gel Extraction Kit (Qiagen, Hilden, Germany), and cloned into *E. coli* DH5 α (Invitrogen, Thermo Fisher Scientific, Waltham, Massachusetts, U.S.) using pGEM®-T Easy Vector System (Promega, Southampton, UK). Plasmid DNA was purified with QIAprep Spin Miniprep Kit (Qiagen, Hilden, Germany) and quantified using the Quant-iT PicoGreen dsDNA Assay Kit (Invitrogen, Thermo Fisher Scientific, Waltham, Massachusetts, U.S.). The number of copies of each gene was calculated using equations in Daniell et al. (2012).

Amplifications of the artificial spike, the 16S rRNA and *nodD* calibrator controls and the 16S rRNA and *nodD* genes were performed in triplicate using the LightCycler® 480 SYBR Green I Master Kit (Roche, Burgess Hill, UK) following the manufacturer's instructions and using the set of primers of the amplified region of each reaction i.e. Mut-F+Mut-R for the spike (Daniell et al. 2012), F979+R1264 for 16S rRNA, and F88+R443 for *nodD* (Macdonald et al. 2011). All amplifications were carried out under the following conditions: an initial denaturation at 95 °C for 15 min was followed by 42 cycles of 94 °C for 20 s, 58 °C for 30 s, 72 °C for 30 s and a single acquisition step at 81 °C for 5 s. Melt curve analysis was performed between 55 and 95 °C.

In each PCR run, calibration curves were included for the 16S rRNA and *nodD* standards, and the artificial reference spike, by diluting these standards accordingly to give a concentration range from 10^2 to 10^8 copies per reaction in a 10-fold dilution series. A reaction containing 1 μ L of each of these standards was included in each PCR run in duplicate. Crossing points were estimated using the Roche Diagnostic Systems software (Burgess Hill, UK) with default settings for the second derivative method, the copy

number of each gene was calculated by regression analysis, corrected for individual PCR efficiencies calculated with LinRegPCR v 2020.0 (Ruijter et al. 2009) and expressed as number of gene copies g^{-1} dry weight soil, assuming three copies of 16S rRNA and one copy of *nodD* in the genome of *R. leguminosarum* (Macdonald et al. 2011). Although specificity of the 16S rRNA and *nodD* primers for *R. leguminosarum* Rlv, respectively, was previously shown by MacDonald et al. (2011), their specificity was further confirmed by performing a BLASTn search in the NCBI database for both 16S rRNA primers. This showed that all sequences that had a match for both primers belonged to the genus *Rhizobium* with *R. leguminosarum* the most common species. A similar search carried out with both *nodD* primers only produced *Rhizobium* species with, again, *R. leguminosarum* the most frequent matches, and most importantly that all isolates were in sv. *viciae* (Ferrando-Molina, unpublished).

Isolation of rhizobial symbionts from the CSC and other sites

A further aim of the study was to assess the genetic diversity of the rhizobia nodulating the faba bean at the CSC to determine their identity and hence their possible origins given the prolonged absence of legume cropping at this site. Symbionts were also assessed for their functional ability to promote legume growth in comparison with other local, Scottish, and British rhizobial isolates. Therefore, rhizobia were isolated from faba bean nodules that were sampled from the same fields as the BNF determinations in the CSC; three nodules per plant were sampled from three plants from each treatment (conventional and integrated) in each 18 m row in 2012 and 2013, and from one plant per row in 2014, 2015 and 2016. For comparison with the CSC isolates, rhizobia were also isolated from nodules on faba bean and pea crops growing in fields adjacent to the CSC, as well as from wild legumes belonging to the genera *Lathyrus* and *Vicia* that were growing in the field margins at the CSC and in its general locality in East Scotland. To place the CSC isolates into a wider geographical context, additional isolates were obtained from the soil in other agricultural and non-agricultural locations across the British Isles (Fig. 1, Table S1) by

using pea, faba bean or lentil as “trap” plants. For this, surface-sterilized seeds (70% [v/v] ethanol for 1 min, followed by immersion in sodium hypochlorite (2.5% [v/v] NaClO) for 5 min, and then rinsing thrice in sterile distilled water (SDW)) were placed into autoclaved pots with a sterile vermiculite-perlite substrate plus a small quantity of the soil (100 g). The plants were watered with tap water as required. Plants were harvested after 4–6 weeks of growth, and pink healthy nodules, if present, were sampled from freshly washed roots. Five pots of uninoculated plants with just vermiculite-perlite were randomly distributed on the bench in the glasshouse or growth room, but none were nodulated and all died from N-starvation before harvesting the “inoculated” plants.

The nodules from each plant (CSC and others) were processed separately by surface sterilizing them in 70% [v/v] ethanol for 1 min, followed by immersion in sodium hypochlorite (2.5% [v/v] NaClO) for 3 min, and then rinsing thrice in SDW. The nodules were then crushed using a sterile plastic pestle, and the nodule extracts were grown on Medium 79 (Fred and Waksman 1928), otherwise known as yeast mannitol agar or YMA (Vincent 1970), with Congo Red (CR) added to make YMA–CR plates, and incubated at 28 °C for 24–48 h. Single colonies were picked off and individually streaked onto freshly prepared YMA–CR plates. Once pure isolates were obtained, a single colony from each YMA–CR plate was used to inoculate a sterile 5 ml tryptone-yeast (TY) broth (Beringer 1974). Cultures were grown at 28 °C for 24–48 h in a shaking incubator (150 rpm). Liquid cultures at log phase (with an OD_{600} between 0.2 and 0.8) were used to prepare 25% [v/v] sterile glycerol stocks for long term storage at -80°C and DNA extractions.

DNA extraction from nodule isolates

At log phase, 4 mL of each liquid culture was centrifuged at 5,000 $\times g$ for 15 min (Sigma 4K15, Dorset, UK) and the supernatant removed. The pellets were re-suspended in 0.4 mL of sterile TE buffer (10 mM Tris–Cl pH 8, 1 mM EDTA), 20% [w/v] sodium dodecyl sulphate (SDS; final conc. 0.5% [w/v]) and $>800 \text{ U } \mu\text{L}^{-1}$ proteinase K (Sigma, Dorset, UK). The samples were incubated at 37 °C for 1 h before addition of phenol:chloroform:isoamyl alcohol (25:24:1

[v/v/v]; Sigma, Dorset, UK). The samples were then vortexed (1 min), followed by a 15 min centrifugation at 14,000 $\times g$ (Sigma 1–1 5 PK, Dorset, UK). To precipitate DNA, the aqueous phase (200 μl) was combined with 10% [v/v] 3 M sodium acetate (NaOAc; pH 5.2) and three volumes of isopropanol (Sigma, Dorset, UK) and incubated at -80 °C for 15 min, or at -20 °C overnight. The DNA was pelleted by 15 min centrifugation at 14,000 $\times g$ and washed with 200 μl 70% [v/v] ethanol. Any residual liquid was removed after re-centrifugation for 1 min at 14,000 $\times g$ by aspiration and next by drying at 37 °C for 15 min. The DNA pellets were re-suspended in filter-sterilised milliQ water (50 μl). All centrifugation steps were performed at 4 °C.

Identification of rhizobia via sequencing of their *rrs* (16S rRNA) and nodulation (*nodA* and *nodD*) genes

Primers and PCR thermal profiles used in this study are listed in Table S4. Each 30 μl PCR reaction mixture used 1x Colorless GoTaq® Reaction Buffer (1.5 mM MgCl_2 final concentration; Promega, Southampton, UK), 0.2 mM of each dNTP, 0.4 μM concentration of each primer, 1.25 U of GoTaq DNA polymerase (Promega, Southampton, UK) and 1 μL DNA template. All reactions were performed on G-Storm GS1 thermal cyclers (GRI Ltd, Braintree, UK). To confirm successful amplification of the correct region, PCR products were resolved by electrophoresis on agarose gels with SYBR® Safe DNA Gel Stain (Invitrogen, Thermo Fisher Scientific, Waltham, Massachusetts, U.S.) and visualised using UV-illumination (FluorChem® Imager, Alpha Innotech, San Leandro, CA, U.S.). The PCR products were then purified using Illustra ExoProStar™ 1-step (GE Healthcare US77702V, Chicago, Illinois, U.S.) or using QIAquick-spin columns (Qiagen, Hilden, Germany), according to the manufacturer’s recommendations, and sequenced using an ABI3730 DNA analyser with a 36 cm x 48 capillary array (Applied Biosystems®, Thermo Fisher Scientific, Waltham, Massachusetts, U.S.). All sequencing was performed by the sequencing service at the James Hutton Institute. All the sequences were obtained with the Forward primer only, and these were inspected and edited manually (trimmed) using BioEdit Sequence Alignment Editor Version 7.2 (Hall 1999). The sequences

were screened against databases using the nucleotide basic local alignment tool (BLASTN) queuing system (Altschul et al. 1997) 2.2.28 on the NCBI website.

Phylogenetic analysis of rhizobial isolates

Evolutionary analyses were conducted in MEGAX (Kumar et al. 2018). First, sequences were aligned using Clustal Ω (Sievers et al. 2011), then the best models were selected. Next, gene trees were inferred by using the Maximum Likelihood (ML) method and Tamura 3-parameter model with 1000 bootstrap replicates. Only bootstrap values >50% are shown in the trees. All positions with less than 95% site coverage were eliminated (partial deletion option). A discrete Gamma distribution was used to model evolutionary rate differences among sites (5 categories) in the phylogeny of the *nodD* gene (+G, parameter = 0.2861) and the *nodA* gene (+G, parameter = 0.2672).

Assessment of the plant growth-promoting (BNF) potential of rhizobial isolates on pea and faba bean

All the isolates from the CSC plus those from other faba bean and pea crops assessed for their BNF contributions (Fig. 1), together with isolates from various wild legumes, were inoculated onto pea cv. Corus, and grown in a glasshouse to assess their ability to promote the growth of a typical *Rlv* host in the absence of soil N. Various reference strains were included for comparative purposes, including *V. faba* strains from the study of Mutch and Young (2004), strains isolated from faba bean in Ethiopia (Gebre Yohannes, unpublished), and strains isolated from lentil in Wiltshire, South-West England (this study). After the trials on cv. Corus, the 13 highest-performing strains were selected for further trials on pea cv. Kareni and on faba bean cv. Vertigo in comparison with a low-performing strain plus two standard laboratory strains. Controls were uninoculated plants. The experiments were performed using 1 L pots filled with a 1:1 mixture of autoclaved vermiculite and perlite; 3 replicate pots per strain/treatment. To prevent cross-contamination during watering the pots were covered in plastic film with a hole for the shoot to emerge. Plants were fed weekly with an N-free nutrient solution (Burchill et al. 2014), and watered daily or as required. Plants were harvested at the flowering stage (49 d after inoculation for pea and 70 dpi for

faba bean) and above ground biomass quantified as a proxy for BNF (Unkovich et al. 2008).

Sampling of faba bean and pea crops from a range of British farms

To extend the relevance of our single, detailed field study, and to explore BNF in faba bean and pea more generally across commercial crops in Britain, eleven additional sites (five for faba bean and six for pea) were selected following a survey of pulse growers conducted in collaboration with the Processors and Growers Research Organisation (PGRO) (Fig. 1). Participating growers were advised how to sample aerial parts of their faba bean and/or pea crops together with associated non-legume weeds and/or volunteers as for the CSC (see above); these samples were sent to the James Hutton Institute together with soil samples from the same fields for rhizobial trapping trials (see earlier). The plant samples were treated as per the CSC faba bean samples, except that only their $\delta^{15}\text{N}$ values were determined, which were then used to calculate %Ndfa. *B*-values were determined as described above for any faba bean and pea varieties that had not already been obtained for the CSC %Ndfa calculations.

Statistical analyses

For analysis of the CSC data, the Restricted Maximum Likelihood (REML) and the linear mixed model approach procedures were performed in GenStat for Windows 21th Edition (VSN International Ltd., Hemel Hempstead, U.K.) for shoot biomass and %N of the faba bean grown in the four-year rotation (2012–2015), as described previously by Freitag et al. (2018). In short, Year+Variety*Treatment effects were fitted as fixed effects. Terms: Year.Variety + Year.Treatment + Year.Strip.Treatment (accounting for differences between strips in a half-field) + Year.Rep (accounting for trends down the field) + Year.Treatment.Rep (accounting for trends down a half-field of the field halves) were included as random effects. As the grain yield, grain N and residue N were only measured from whole strips, the random effects of Variety, Rep and Strip were excluded in REML for these variables. As there were changes to the selection of varieties grown for field beans between years, cv. Maris Bead, which was present in

only one year (2012), was excluded from the analysis. Multiple comparisons were carried out using Fisher's unprotected least significant difference test. Details are given in File S1A.

An analysis of variance (ANOVA) and Bonferroni test in GenStat for Windows 20th Edition (VSN International Ltd., Hemel Hempstead, U.K.) were used to adjust for multiple comparisons in assessment of faba bean nodule and root dry weight. Means and standard errors were calculated for each year, variety of faba bean, and treatment. However, as different varieties were used each year, the means for years were not statistically compared.

The ANOVA analysis of the qPCR data was carried out with R version 3.5.1 (R core Team 2013) implemented on RStudio version 1.1456 (R Studio Team 2015). When the ANOVA results were significant, package *multcomp* version 1.4.10 (Hothorn et al. 2008) was used to carry out the post-hoc pairwise comparison Tukey's Honest Significant Difference (Tukey's HSD) test for comparing means between fields. Additionally, packages *dplyr* version 0.8.3 (Wickham et al. 2019) and *ggplot2* version 3.1.0 (Wickham 2016) were used for data handling and visualisation, respectively. Details are given in File S1B.

Results

Nitrogen fixation and nodulation by faba bean in an experimental rotation incorporating compost instead of fertilizer

Variations in crop biomass, shoot N, shoot ^{15}N , and grain yield reflected the seasonal variations in weather over the four years of the CSC rotation tested in the present study (2012–2015) (Fig. S1), with 2014 being exceptionally high in terms of all growth parameters, including grain yield (Figs. 2, S2; Table S5). In terms of BNF, the %Ndfa values at early to mid-podfill stage were consistently high in each season, ranging from c. 80% in 2013 to >90% in 2014 and 2015 (Table S5); the values from the integrated treatment were generally higher than those from the conventional treatment, but this was only significant in 2012 when the %Ndfa of the conventional and integrated plants were 80.99 and 90.52, respectively (Table S5). The BNF data closely

followed the same pattern as shoot biomass and shoot N content, with the crops in 2012 and 2013 fixing less than half those in 2014 and 2015 (Figs. 2B, S2, Table S5). In 2014, by including projected values for the underground contribution using the root factor calculated by Unkovich et al. (2010), it was estimated that faba bean fixed more than 300 kg N ha⁻¹ under both conventional and integrated management (Table S5, Fig. S2D, E). There was a significant interaction between management type and faba bean genotype on shoot fixed N and total plant fixed N in 2014 and 2015, with BNF by cvs. Babylon and Boxer significantly benefitting from the integrated treatment (Fig. S2B-E, Table S5).

At crop harvest, grain N and estimates of residual N (Fig. 2D, Table S5) followed the same patterns as grain yield; in the highest-performing year (2014) more than 100 kg N ha⁻¹ was estimated to be left in the crop residues after the grain had been harvested (Fig. 2D). There were no significant differences between treatments in dry grain yield, grain N and residue N.

Overall, there were no significant differences between treatments in each of the three years that were analysed for nodule and root dry weights (2012, 2013 and 2014), although there were significant differences between varieties in 2012 and 2013 (Table S6).

Quantification of rhizobia in soils subsequently cropped with faba bean

Soil populations of the potential symbionts of faba bean at the CSC were assessed every March in the years 2012–2015. The concentration of *R. leguminosarum* 16S rRNA and *Rlv nodD* gene copy numbers (Fig. 3a) did not differ between conventional and integrated treatments within each field cropped with faba bean, but there were significant differences between years for both *R. leguminosarum* 16S rRNA (Fig. 3a) and *Rlv nodD* (Fig. 3b) gene copy numbers. The faba bean-cropped field in year 2012 had the highest concentrations of both markers (1.62×10^6 *R. leguminosarum* 16S rRNA g dry soil⁻¹; 1.93×10^5 *Rlv nodD* g dry soil⁻¹) whilst the field in 2015 had the lowest concentration for *R. leguminosarum* 16S rRNA (6.42×10^5 *Rleg* 16S rRNA g dry soil⁻¹). The fields in 2013 and 2015 had the lowest concentration

of *Rlv nodD* (1.31×10^5 and 1.21×10^5 *Rlv nodD* g dry soil⁻¹, respectively). Despite the differences observed in gene copy number of both markers, the ratio of the copy numbers of *Rlv nodD* per copy of *R. leguminosarum* 16S rRNA (Fig. 3c) was similar in the faba bean-cropped fields in 2012 and in 2013, but there was a significantly higher ratio in the faba bean-cropped field in 2014 (conventional treatment only), and most particularly in 2015 wherein this field housed the highest proportion of *Rlv nodD* per copy of *R. leguminosarum* 16S rRNA (19.84% and 17.98% in the conventional and integrated treatments, respectively).

Genetic diversity of rhizobia isolated from faba bean in comparison to other cultivated and wild legumes

The genetic diversity of the rhizobia nodulating faba bean at the study site from 2011 to 2016 was determined, and then compared to neighbouring localities and other sites across Britain. In total, 144 rhizobial isolates were obtained from nodules on faba bean grown at the CSC, as well as from faba bean and pea crops neighbouring the CSC, from wild legumes in the CSC field margins, and from other cropped and non-cropped sites in Scotland and England (Table S1, S8). Reference strains from other parts of Britain included six faba bean strains from Yorkshire in Northern England (Mutch and Young 2004), the well-studied laboratory standard strain *Rlv* 3841 (Young et al. 2006), and strain rcr1045 which is commonly used as the basis of commercial faba bean and/or pea inoculants. Some non-British reference strains were also included in the analyses to provide an international context; these included seven strains isolated from faba bean in Ethiopia, and a strain from *Lathyrus sativus* in the USA. All the 160 strains in the study were identified as belonging to the genus *Rhizobium* based on sequences of their 16S rRNA (*rrs*) genes (Table S1, S8). Highest similarity BLAST hits suggested that they were all close to *R. leguminosarum*, which is the most commonly isolated symbiont of this group of legumes in Northern Europe (Ampomah and Huss-Danell 2017; De Meyer et al. 2011; Mutch and Young 2004). However, as information about the symbiotic properties of *Rhizobium* resides in the transferable symbiotic plasmid (pSym) which contains the nitrogen fixation (*nif*) and nodulation (*nod*) genes (Young et al. 2006), in order to better

understand the genetic diversity of the isolates, two nodulation genes (*nodA*, *nodD*) were then sequenced and compared to those in the database.

The *nodA* and *nodD* phylogenies showed a high level of congruence, with an almost identical distribution of the isolates between two large and distinct clades for both genes; these were closely related to strains previously isolated from faba bean, pea, and other *Vicia*, *Lathyrus* and *Lens* species (Figs. 4, S3, S4, S5). Taking the *nodD* phylogeny as an example (Figs. 4, S3), Group I comprised mainly strains from pea, lentil and wild legumes growing in the islands of Orkney and Skye through mainland Scotland into northern (Yorkshire; Mutch & Young (2004)) and southern (Wiltshire, Norfolk and Cambridgeshire) England. It included all the strains isolated from wild legumes (*Lathyrus pratensis* L. and *Vicia cracca* L.) in the CSC field margins (JHI27, JHI32, and JHI35) (Fig. S3). The only *V. faba* isolates in Group I were some of those sampled from the CSC in 2013 (16 strains), two CSC strains from 2015, JHI983 from a farm neighbouring the CSC, a single strain from the centre of England (JHI1147), and four of the Ethiopian strains. Group I also harboured strains from the USA (pea), Poland (pea), and Sweden (wild legumes). Group II contained most of the *V. faba* isolates from the CSC (sampled in the six years from 2011 to 2016, and including the 2013 isolates not clustered within Group I) and from *V. faba* cultivated in farms neighbouring the CSC (e.g. JHI981, JHI982 and JHI984), as well as isolates trapped from pea grown in CSC soils from 2014 (Fig. S3). Group II also included most of the faba bean isolates from other parts of Scotland and England, as well as several pea and lentil isolates, together with *V. faba* strains from Ethiopia, Spain, Canada, and China. All strains in Group II were closely related to the sequenced laboratory strain *rlv3841*. In addition to the two large groups, four smaller ones, Groups III - VI, were also apparent (Figs. 4, S3). Group III contained the type strain of *Rlv*, USDA 2370^T (isolated from *V. faba* in Tunisia) together with four strains from the same location in Angus, Scotland, which were isolated from nodules on pea (JHI10, JHI13, JHI1438) or *V. sativa* (JHI47). Group IV consisted of JHI1249 isolated from pea nodules in Orkney (Scotland) together with strains from *Lathyrus sativus* in the USA (JHI1084), *V. faba* in China and Jordan, and lentil in Bangladesh (type strains of *R. bangladeshense*, *R. binae*, and *R. lentis*).

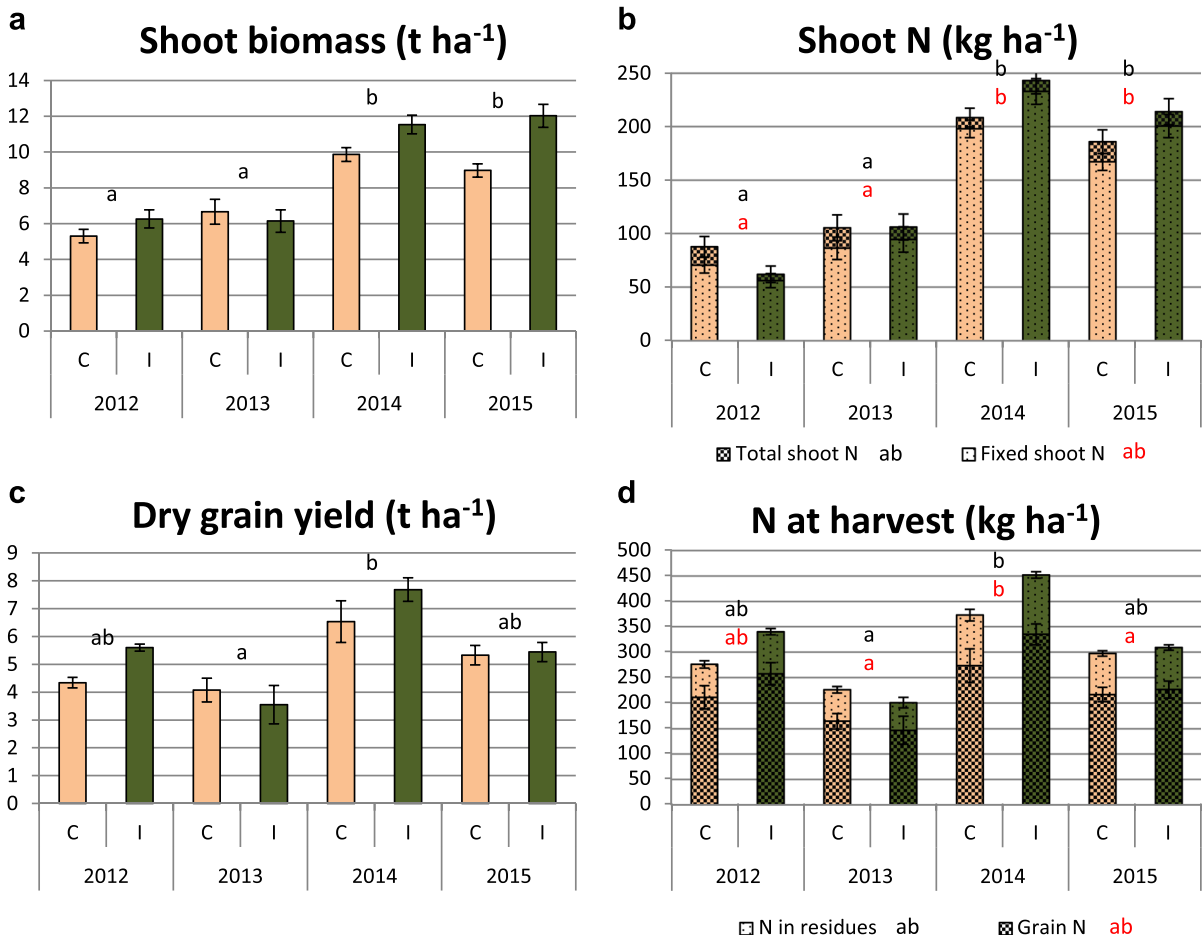


Fig. 2 Shoot dry biomass (a), total crop N and total crop fixed N at mid pod-fill (b), dry grain yield at harvest (c), and grain N and residual N at harvest (including roots) (d) of faba bean during the 2012–2015 growing seasons at the Centre for Sus-

tainable Cropping (CSC) farm platform with conventional (C) or integrated (I) management. Data are means ± standard error. Significant differences ($p < 0.05$) are indicated with different letters

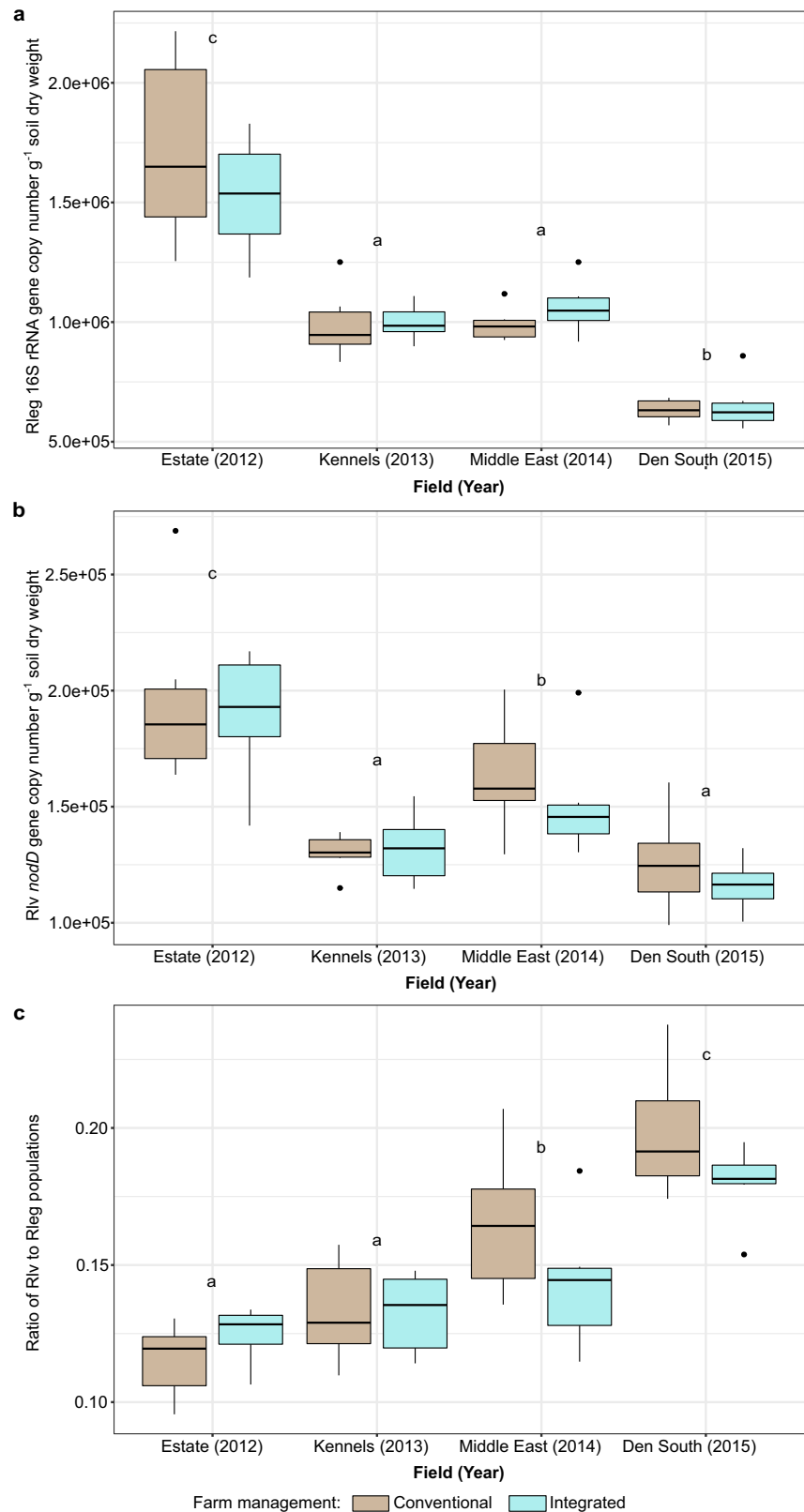
Group V consisted of a single UK strain, JHI2450, isolated from pea grown in soil from Norfolk (east England), together with Swedish and Russian strains isolated from wild legumes (Ampomah and Huss-Danell, 2017). Finally, Group VI comprised only JHI2449, a single pea strain from Norfolk in south-east England.

Plant growth-promoting (BNF) potential of the rhizobial isolates on pea and faba bean

Almost all the isolates and reference strains (147) were tested in the glasshouse for their ability to promote the growth of pea (Fig. S6), a relatively “promiscuous” *Rlv*-nodulating species

(Mutch and Young 2004). All the isolates nodulated cv. Corus, but some were particularly effective in terms of promoting shoot dry weight e.g. many resulted in plants with shoot dry weights that were double those inoculated with the standard laboratory strains, *Rlv* 3841 and *rcr1045*. Fourteen of the isolates were selected for further trials on pea cv. Kareni (Fig. 5A) and on faba bean cv. Vertigo (Fig. 5B). The highest performing strain in terms of growth promotion on both pea varieties was JHI388; this strain, as well as other strains that promoted the highest measured growth on pea cvs Corus or Kareni were isolated from various hosts, including faba bean (JHI388, JHI370, VF5), the rare wild species *Vicia lutea*

Fig. 3 Quantifications of *R. leguminosarum* 16S rRNA marker (a) and *Rlv nodD* (b) given as gene copy number per g of dry soil per year in fields cropped with faba bean during the 2012–2015 growing seasons at the Centre for Sustainable Cropping (CSC) farm platform with conventional (C) or integrated (I) management. The ratio of *Rlv nodD* per *R. leguminosarum* 16S rRNA is also shown (c). Each pair of boxplots with the same letter did not show significant differences (p -value < 0.05) between each other according to the results of Tukey's HSD. Outliers are data points more than 1.5·IQR (interquartile range) above the third quartile (Q3) or below the first quartile (Q1). Low outliers are below the first quartile (Q1–1.5·IQR) and high outliers are above the third quartile (Q3+1.5·IQR)



(JHI42), and pea (JHI13). The five strains that promoted the most growth of faba bean cv. Vertigo were not the same as those that promoted the most growth of pea, and they were also isolated from a wide range of hosts, including *V. tetrasperma* (JHI24), faba bean (VF2), pea (JHI974, Rlv 3841), and *Lathyrus linifolius* (JHI1093). The Rlv strains that promoted the most growth of either legume host did not fall into any particular *nodAD* clade (Table 2).

Estimates of the contribution of BNF (%Ndfa) to faba bean and pea crops in other locations in the British Isles

The $\delta^{15}\text{N}$ of faba bean and pea grown on commercial farms from the northern Isles of Scotland (Orkney) down through to southern England were used to estimate %Ndfa at these various locations (Fig. 1). In all cases, the difference between the legumes and the associated non-legume reference plants were indicative of high contributions from BNF with estimates ranging from 82 to 96% for faba bean and 58–97% for pea (Table S7).

Discussion

Faba bean can provide most of its nitrogen requirements via BNF in a northern temperate cropping system

The CSC provided a suitable platform for assessing the ability of faba bean to fix N in Northern Britain. Although several studies have been conducted in other European countries, as well as in North America and Australia (Denton et al. 2013; Giambalvo et al. 2012; Hossain et al. 2016; Jensen et al. 2010; Van Zwieten et al. 2015), the present field scale study is the first to provide direct experimental evidence over several consecutive seasons that faba bean can fix almost all of its N-requirements under the relatively wet and cool climate of the British Isles.

The %Ndfa in the CSC trial were generally high, demonstrating that most of the plant N-requirements were met by BNF, as has been observed in many other locations in Europe and elsewhere in the world (Denton et al. 2013; Jensen et al. 2010; Peoples

et al. 2021). The differences in %Ndfa between 2012 (c. 80%) and 2013 (c. 90%) were not reflected in their total N which were very similar; this suggests that the 2013 crop assimilated at least 40 kg ha⁻¹ of soil N at mid-podfill stage, which corresponds to the available N in the field at the start of the 2013 season. One possibility is that the cold spring in 2013 inhibited nodulation and BNF, so that the plants had to compensate for the lack of fixed N by utilising the available soil N until the onset of the warmer summer weather (Burchill et al. 2014). In all the other years the high %Ndfa demonstrated that uptake of available N in the soil was very low, probably less than 30 kg ha⁻¹. Faba bean is, however, particularly effective at fixing N when grown in soils with high levels of applied mineral N. For example, 300 kg ha⁻¹ will completely inhibit BNF by most legume crops, but faba bean can maintain %Ndfa levels above 40% at this fertiliser rate (Guinet et al. 2018).

The quantities of N fixed by faba bean in the present study were generally within the range previously reported in northern Europe and elsewhere i.e. 100–250 kg N ha⁻¹ yr⁻¹ (Jensen et al. 2010), although there were statistically significant variations from season to season. In 2012 and 2013, at 100 kg N ha⁻¹ yr⁻¹ the BNF values were at the lower end of the range of previous estimates, but in 2014 and 2015 they were much higher, ranging from 250 to 350 kg N ha⁻¹ yr⁻¹. These differences can be attributed to biomass production by the early- to mid-podfill stage (the stage at which BNF is maximal), as at high %Ndfa (>80%) BNF is essentially a function of the %N and biomass of the shoots (Unkovich et al. 2010). Biomass production was low in 2012 and 2013 owing to poor growing conditions (flooding in 2012 and a prolonged cold spring followed by a hot and dry summer in 2013), but in 2014 (and to a lesser extent in 2015) weather conditions were ideal for crop growth, and consequently plant biomass and grain yields were high. This was also reflected in the total crop N at the final harvest which is comprised of grain N, as well as the N left in the crop residues (including the roots) of over 100 kg N ha⁻¹ yr⁻¹; these N-residue values are within the range predicted or measured by other studies of nodulated field-grown faba bean (Denton et al. 2013; Jensen et al. 2010).

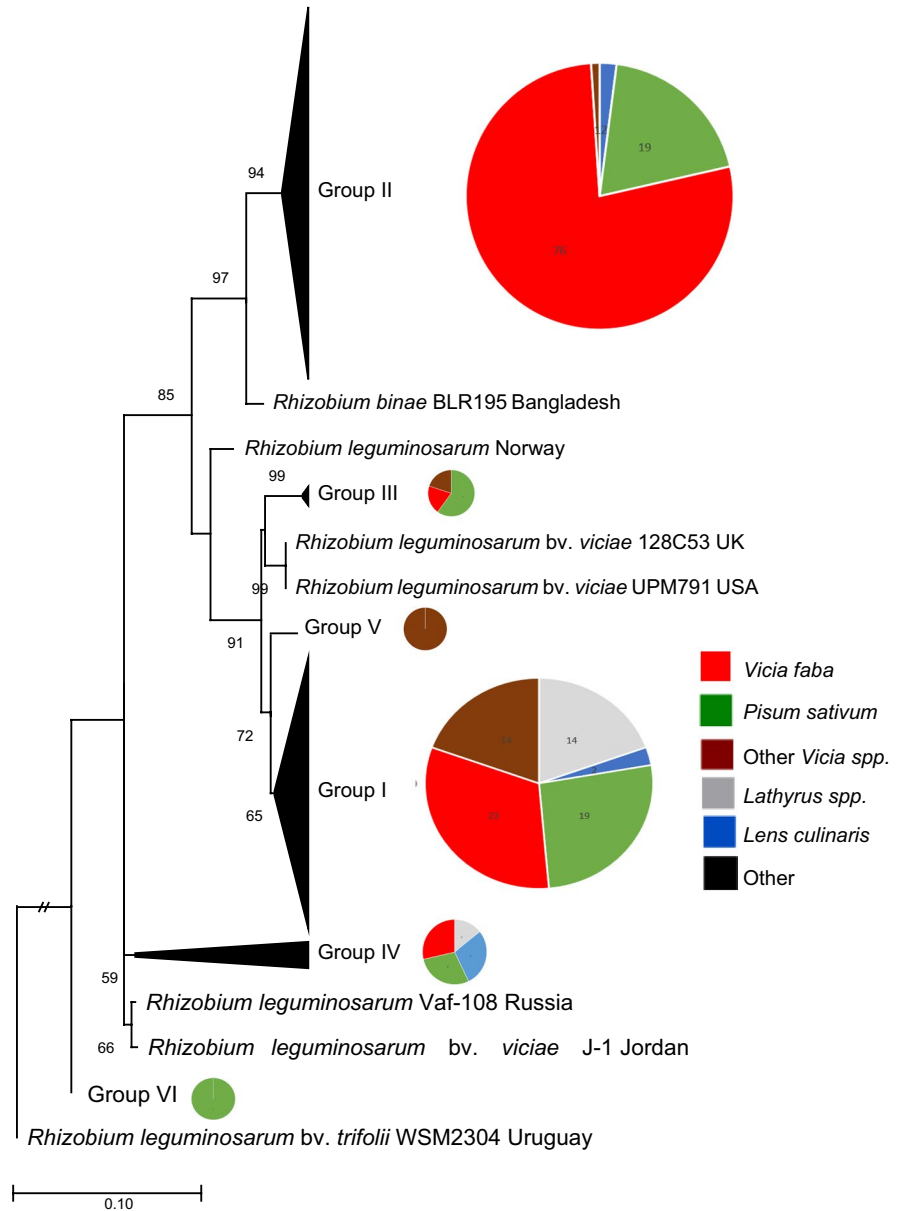
Commercial faba bean and pea crops sampled in other parts of the British Isles also had generally high dependence on BNF. None of the fields in which

Table 2 Ranking of *Rhizobium leguminosarum* sv. *viciae* strains in their plant growth-promoting ability on two pea varieties (Karení and Corus) and one faba bean variety (Vertigo)

JHI strain code	Host of origin and location in Britain	Plant growth promoting ability on different hosts (ranking)			<i>nodD</i> Clade
		Pea cv. Karení	Pea cv. Corus	Faba bean cv. Vertigo	
24	<i>V. tetrasperma</i> ; UK: Living Field Garden, JHI, Dundee, Angus; 2011	12	15	1	1
VF2	<i>V. faba</i> ; UK: University of York campus, York; 2004	10	9	2	2
974	<i>P. sativum</i> ; UK: Balruddery Farm, Angus; 2016	6	11	3	2
1093	<i>L. tinifolius</i> ; UK: JHI, Dundee, Angus; 2017	11	14	4	1
3841	<i>P. sativum</i> ; UK: England	16	42	5	2
1266	<i>P. sativum</i> ; UK: Weyland Farms (trap soil), Kirkwall, Orkney; 2017	14	5	6	2
388	<i>V. faba</i> ; UK: CSC (C), Balruddery Farm, Angus; 2013	1	1	7	1
42	<i>V. lutea</i> ; UK: Monifieth, Angus; 2011	5	3	8	1
370	<i>V. faba</i> ; UK: CSC (C), Balruddery Farm, Angus; 2013	2	13	9	1
783/rcr1045	<i>P. sativum</i> ; UK: Rothamsted Rhizobium Collection; 1979	7	89	10	1
362	<i>V. faba</i> ; UK: CSC (I), Balruddery Farm, Angus; 2013	9	7	11	1
13	<i>P. sativum</i> ; UK: Monifieth, Angus; 2011	13	2	12	3
1253	<i>P. sativum</i> ; UK: Weyland Farms (trap soil), Kirkwall, Orkney; 2017	15	19	13	1
VF5	<i>V. faba</i> ; UK: University of York campus, York; 2004	3	12	14	2
979	<i>V. faba</i> ; UK: CSC (C), Balruddery Farm, Angus; 2016	4	8	15	2
387	<i>V. faba</i> ; UK: CSC (C), Balruddery Farm, Angus; 2013	8	10	16	1

The three highest performing strains on each crop are highlighted in purple (1st), yellow (2nd) and green (3rd). The *nodD* genotypes of the strains are indicated (taken from Fig. 5) as belonging to either Clade 1 (red), Clade 2 (blue) or Clade 3 (light green)

Fig. 4 Collapsed phylogeny of the *nodD* gene based on 192 nucleotide sequences (588 positions in the final dataset) from rhizobia isolated from nodules on species of *Vicia*, *Pisum*, *Lathyrus* and *Lens* at all sites sampled in the British Isles. The tree is rooted with *Rhizobium leguminosarum* bv. *trifolii* WSM2304. The type strains are shown with a ‘T’ at the end of each strain code. The trees are drawn to scale, with branch lengths measured in the number of substitutions per site. The pie charts indicate number of strains per group isolated from different legume hosts: *Vicia faba* (red); *Pisum sativum* (green); *Lens culinaris* (blue); other *Vicia* species (brown); *Phaseolus vulgaris* (pink); *Lathyrus* species (grey)



these crops were grown received applications of mineral N fertilisers, and so these data also support the earlier contention that faba bean and pea in the British Isles can provide most of their N-requirements through BNF. Such confirmatory data from actual farm locations are considered to be critical in assessing if experimental %Ndfa values are valid in terms of calculating global inputs of BNF (Peoples et al. 2021).

Integrated crop management can enhance BNF by some faba bean varieties in a northern temperate cropping system

A positive effect of the integrated treatment on the BNF of faba bean at the CSC was only apparent in the high-yielding years, but it was especially evident in 2014 where it resulted in an estimated additional 50–100 kg N ha⁻¹ yr⁻¹ being fixed, depending on

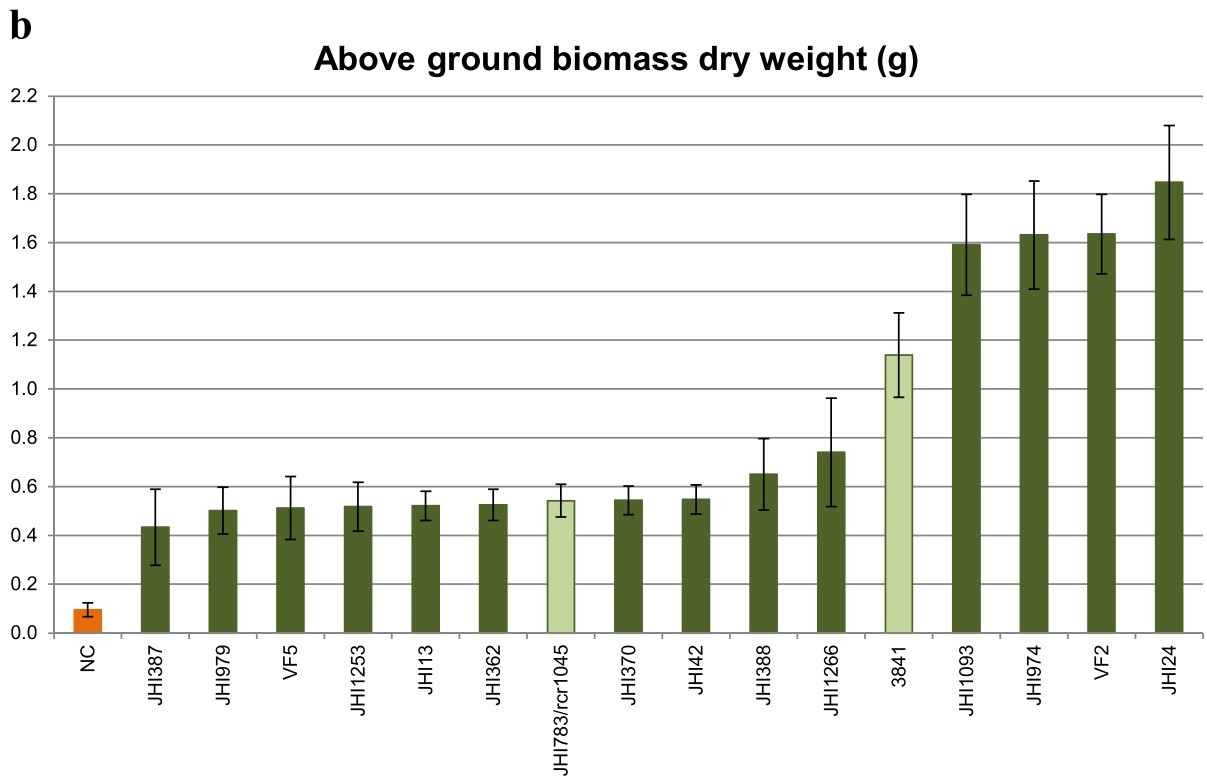
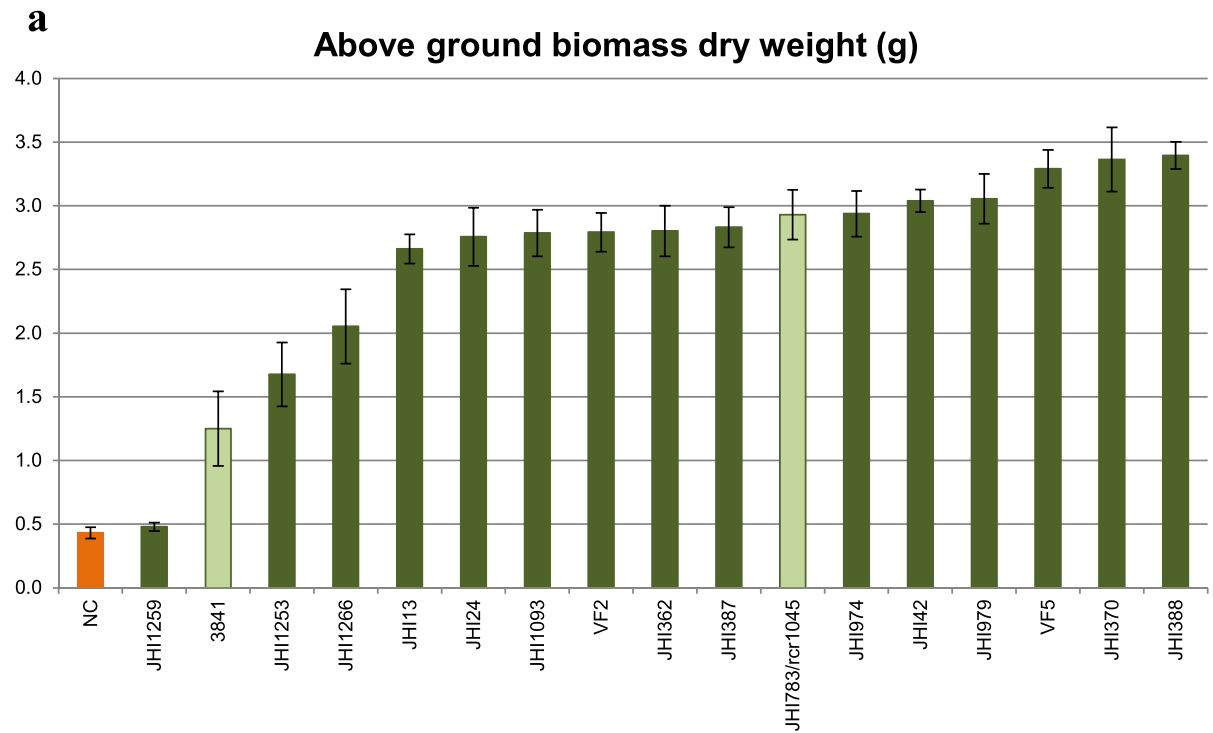


Fig. 5 Effect of inoculation of rhizobial strains on the aerial dry biomass of pea cv. Kareni (a) and faba bean cv. Vertigo (b). Data from the reference strains, rcr1045 and rlv3841, are indicated in light green, and non-inoculated controls (NC) in orange. Data are means \pm standard error

variety (Fig. S2c, e). The positive effects of integrated management on BNF in 2014 and 2015 cannot be explained in terms of either rhizobial populations (both absolute and in terms of the symbiosis gene, *nodD*) nor nodulation, as the mass of nodules per plant was not significantly increased by this treatment. This is surprising given the strong link observed between N-demand and nodule numbers/mass in other legumes, such as pea (Voisin et al. 2010). It possibly suggests that the rate of BNF per nodule was increased in the integrated field halves in 2014 and 2015 where high BNF was driven by high demand for N to supply the rapidly growing plants in these years where temperatures and precipitation were close to optimum for crop development. An increased BNF rate might have been due to the main component of the integrated treatment, the compost, raising soil pH, carbon stocks, and moisture retention, and also by acting as a controlled-release fertilizer, supplying increased concentrations of the main plant growth-limiting macronutrients (P and K) (Hawes et al. 2018), and possibly micronutrients essential for the BNF process, particularly Mo (Van Zwieten et al. 2015). Another clue as to the mechanism behind a possible positive effect of Integrated management on BNF is given by the interaction between this treatment and the faba bean varieties, with cvs Boxer and Babylon responding particularly well; this suggests that there is a genetic component underlying the ability of faba bean to benefit from the improved soil conditions.

Rhizobia populations in the CSC soils were sufficient to support faba bean BNF despite a 50-plus year absence of legume crops

Populations of *R. leguminosarum* in the CSC soils in the four years from 2012 to 2015 (10^5 to 10^6 g⁻¹ soil) were similar to those obtained using most probable number (MPN) estimates in Denmark (Jensen and Sørensen 1987), and England (Hirsch 1996; Nutman and Hearne 1979), and in England using both MPN and qPCR with the same primer sets used in the

present study (Macdonald et al. 2011). It should be noted that the 16S rRNA primers potentially recognize all *R. leguminosarum* cells in the soil, including both *Rlv* and clover-nodulating strains of *R. leguminosarum* sv. *trifolii* (*Rlt*), as well as non-symbiotic strains (Hirsch 1996), whereas data obtained using the *nodD* primers are more useful in specifically evaluating populations of faba bean-nodulating *Rlv* (Macdonald et al. 2011); these were approximately 10^5 DNA copy numbers g⁻¹ soil in the CSC. The *Rlv* population values can be considered as baseline data, as the soil samples were taken from the CSC fields in March just prior to sowing the faba bean, and except for the field which was cropped with faba bean in both 2011 and 2015, no legumes were cropped in the fields used in the experimental rotation for at least 50 years prior to its onset. This level is consistent with the findings of Boivin et al. (2020), who recorded levels of *Rlv nodD* DNA copy number in the range of 10^5 to 10^8 in European agricultural soils that mostly had some previous history of faba bean cultivation, but not rhizobial inoculation. The significant, albeit relatively minor, differences between years in terms of both total *R. leguminosarum* and *Rlv* populations (e.g. comparing 2012 with 2015) may be due to the locational effects of the different fields analyzed. The higher *Rlv/R. leguminosarum* ratio in 2015 is intriguing in spite of overall lower values of both component populations in this year, and could be due to the prior cropping of this field with faba bean in 2011, as the recent presence of a specific legume host (e.g. pea) is known to facilitate the persistence of *Rlv* populations (Hirsch 1996; Macdonald et al. 2011).

Compared to other studies that have examined the impact of prolonged absence of legume cropping on *Rlv* populations in uninoculated northern European soils, the population densities in the present study of CSC soils with more than 50 years without legumes are relatively high. For example, Nutman and Hearne (1979) reported 1000-fold decreases in *Rlv* populations in southern English soils after 14 years under cereals and negligible levels of *Rlv* after prolonged fallow, suggesting that for maintenance of *Rlv* in soils cropping with non-legumes is preferable to no cropping at all, as these may help maintain saprophytic rhizobial populations by providing C e.g. from root exudates and plant decomposition (Hirsch 1996). Similar conclusions were reached by Jensen and Sørensen (1987) in their study of Danish soils

artificially inoculated with Streptomycin-resistant *Rlv* strains i.e. the presence of a host legume (pea) markedly increased the survival of the inoculated strains.

The diversity of *Rlv* strains nodulating faba bean at the CSC suggests that they came from various local sources

Several rhizobium strains were isolated from the CSC and from the other sites in which BNF by faba bean and pea was estimated, as well as from other related crop and wild legumes in which BNF was not estimated. Based upon sequences of their *nodAD* genes, they were distributed into two distinct genotypes of *Rlv*; Group I which contained isolates from wild legumes and some *V. faba* CSC isolates, and Group II which contained the laboratory strain *Rlv* 3841 (Young et al. 2006) and most of the *V. faba* CSC isolates. Similar data were obtained by Laguerre et al. (2003), Mutch and Young (2004) and Tian et al. (2010), and the Group II from the present study is essentially an expansion of the *NodDF-2* group from Mutch and Young (2004), and is equivalent to Group B1 of Boivin et al. (2020). The *NodDF-2* group was considered by Mutch and Young (2004) to be a *V. faba*-specific group as strains within it could readily nodulate faba bean, but those from the other *nodDF* groups had a much reduced capacity to nodulate this domesticated host. In contrast to *V. faba* which appears to be quite selective in terms of which *Rlv* strains can nodulate it (Mutch and Young 2004), all the isolates in the present study, regardless of their original host, were shown to be capable of nodulating pea, and many performed better than a commercially used strain (rcr1045) on both the pea varieties tested. A nodulation test on faba bean using a sub-set of 14 strains from both *nodAD* Groups I and II (including some from the CSC) indicated that they could all nodulate this host. However, the highest-performing strains were not the same as those with pea, and there was no specific *nodAD* genotype associated with a high performance on either host in single inoculation tests, which agrees with Boivin et al. (2020) who concluded that *Rlv nod* genotype is unrelated to symbiotic effectiveness.

Taken together, these tests demonstrated that in spite of reports that prolonged absence of legume cropping can result in a loss of *Rlv* diversity (Depret et al. 2004) the CSC soils harboured a high diversity of effective *Rlv* capable of nodulating faba bean and

pea. The maintenance of these relatively high and quite diverse *Rlv* populations may be the result of various factors including their persistence in the soil as saprophytes from legume-cropping prior to 1970 (although no record exists for the CSC sites, this cannot be excluded), but also legume weeds, including *Vicia* species, which were widespread in arable systems throughout the 20th century (Squire 2017), and invasion from adjacent sites (Hirsch 1996). In the case of the CSC, neighbouring farms were clearly a potential source as strains JHI981, JHI982 and JHI984 (from Carmichael and James Hutton Institute Farms) were included in the *nodAD* Group II that contained most of the CSC faba bean strains, as were pea strains isolated from fields neighbouring the CSC at Balrudery Farm. On the other hand, *nodAD* Group I was the more diverse group (in terms of host), and contained all the strains from wild *Lathyrus* and *Vicia* species resident in the field margins, and probably within the in-field seedbank during the 20th century, so we cannot necessarily conclude that the *nodAD* Group I made a lesser contribution to the in-field *V. faba* symbionts in the CSC. Indeed, it also harboured *V. faba* symbionts, such as another strain from Carmichael Farm (JHI983), as well as a group of 17 CSC strains that were almost exclusively isolated from faba bean cropped in 2013; these 17 strains indicate that location can also be an important determinant of which *Rlv* genotypes predominate in any given field.

Conclusions

Faba bean and pea have been grown in northern Europe for millennia, and although it has long been considered that they do not require any N-fertiliser (<http://www.pgro.org/>; Iannetta et al. 2016; Squire et al. 2019), here we present the first comprehensive evidence that they can fix all their N needs, but also that in addition to these legumes having no requirement for fertiliser N they may also leave a residue of 50–110 kg N ha⁻¹ yr⁻¹ in the soil after they are harvested. With appropriate management this residual N can be made available to the following (non-legume) crops (Jensen et al. 2010). Based on the data from 2014 to 2015 in the present study, changes in management that could be considered to increase BNF, N-accumulation and residual N deposition by faba bean are to introduce a range of integrated soil

cultivation and organic amendments, especially if particular varieties (e.g. Babylon and Boxer) shown to respond positively to this soil amendment are to be sown. Although concern has been raised that low *Rlv* populations with reduced diversity might limit faba bean BNF and yields (Sorwli and Mytton 1986), especially if the decline in pulse cropping in northern Europe is to be reversed (Iannetta et al. 2016; Squire et al. 2019), the present study suggests that as long as legume cropping has continued in some neighbouring fields, and/or if the field margins and in-field seedbank contain wild *Vicia* and *Lathyrus* species, then there will most likely be sufficient rhizobia of appropriate genotypes in most soils to support nodulation of faba bean and pea in suitable cropping areas. Nevertheless, it is also clear that not all rhizobial strains are equal, i.e. there may be potential to apply “elite” strains as inoculants for boosting BNF and grain yield, particularly on soils that have been under long periods of fallow (Nutman and Hearne 1979), and in which low *Rlv* populations have been estimated e.g. using the qPCR method (Macdonald et al. 2011; this study). These elite strains, however, would need to be “tailored” to a particular pulse, as strains that are highly effective on pea are not necessarily as effective on faba bean (and *vice versa*), and moreover, they would need to be assessed for their ability to compete in the soil for nodulation of their target hosts (Boivin et al. 2020; Mendoza-Suárez et al. 2020). On the other hand, if elite strains can compete for nodulation, Westhoek et al. (2021) have recently demonstrated that there is good reason to believe that they can then dominate as symbionts via the host plant “conditionally sanctioning” nodules occupied by other, lesser-performing strains.

It is now increasingly clear that there is a critical need to reduce inputs of fertilizer N into agroecosystems, particularly in the developed world, and that BNF by legumes can play a crucial role in this reduction (Udvardi et al. 2021). The unique aspects of the present study are its field scale plus the multiple years in which it was conducted, whereby it has demonstrated the enormous amounts of N that legume crops can fix. Given this knowledge, the proper harnessing of BNF by legumes should now be implemented to help grow arable crops more sustainably, but also to meet commitments to reducing GHG emissions.

Acknowledgements The James Hutton Institute is supported by the Rural & Environment Science & Analytical Services (RESAS), a division of the Scottish Government. This work was also supported by the EU-FP7 project *Legume Futures* and the EU H2020 projects: ‘*Transition paths to sUustainable legume based systems in Europe*’, (TRUE, Grant Agreement Number 727973); ‘*Designing InnoVative plant teams for Eco-system Resilience and agricultural Sustainability*’ (DIVERSify, Grant Agreement Number 727824); and, ‘*A novel and integrated approach to increase multiple and combined stress tolerance in plants using tomato as a model*’, (TOMRES, Grant Agreement Number 727929). PPMI and EKJ have also been supported by the Genomia Fund (www.genomia.org.uk). MM and EKJ were partly supported by the BBSRC-Newton fund. We thank Roger Vickers at the Processors and Growers Research Organisation (PGRO) and all the growers who allowed us to sample from their fields. Colin Alexander and BIOSO are thanked for their assistance with statistical analyses. Sarah Doherty, Kirstin Buchholz, Gill Banks, Alexandre Baraúna, Linda Ford, Jak Iannetta-Mackay, Paul Neave and Linda Nell are thanked for their technical assistance, and Murray Unkovich for helpful discussions.

Declarations

Conflict of interest The authors declare no conflicts of interest.

Open Access This article is licensed under a Creative Commons Attribution 4.0 International License, which permits use, sharing, adaptation, distribution and reproduction in any medium or format, as long as you give appropriate credit to the original author(s) and the source, provide a link to the Creative Commons licence, and indicate if changes were made. The images or other third party material in this article are included in the article’s Creative Commons licence, unless indicated otherwise in a credit line to the material. If material is not included in the article’s Creative Commons licence and your intended use is not permitted by statutory regulation or exceeds the permitted use, you will need to obtain permission directly from the copyright holder. To view a copy of this licence, visit <http://creativecommons.org/licenses/by/4.0/>.

References

- Altschul SF, Madden TL, Schäffer AA, Zhang J, Zhang Z, Miller W, Lipman DJ (1997) Gapped BLAST and PSI-BLAST: a new generation of protein database search programs. *Nucleic Acids Res* 25:3389–3402
- Alves BJR, Boddey RM, Urquiaga S (2003) The success of BNF in soybean in Brazil. *Plant Soil* 252:1–9
- Ampomah OY, Huss-Danell K (2017) Genetic diversity of rhizobia nodulating native *Vicia* spp. in Sweden. *Syst Appl Microbiol* 39:203–210. <https://doi.org/10.1016/j.syapm.2016.02.002>
- Beringer JE (1974) R factor transfer in *Rhizobium leguminosarum*. *Microbiology* 84:188–198. <https://doi.org/10.1099/00221287-84-1-188>
- Boivin S, Ait Lahmidi N, Sherlock D, Bonhomme M, Dijon D, Heulin-Gotty K, Le-Queré A, Pervent M, Tauzin M, Carlsson G, Jensen E, Journet E-P, Lopez-Bellido

- RJ, Seidenglanz M, Marinkovic J, Colella S, Brunel B, Young P, Lepetit M (2020) Host-specific competitiveness to form nodules in *Rhizobium leguminosarum* symbiovar *viciae*. *New Phytol* 226:555–568. <https://doi.org/10.1111/nph.16392>
- Burchill W, James EK, Li D, Lanigan GJ, Williams M, Iannetta PPM, Humphreys J (2014) Comparisons of biological nitrogen fixation in association with white clover (*Trifolium repens* L.) under four fertiliser nitrogen inputs as measured using two 15 N techniques. *Plant Soil* 385:287–302. <https://doi.org/10.1007/s11104-014-2199-1>
- Carlsson G, Huss-Danell K (2003) Nitrogen fixation in perennial forage legumes in the field. *Plant Soil* 253:353–372
- Carlsson G, Huss-Danell K (2014) Does nitrogen transfer between plants confound 15 N-based quantifications of N₂ fixation? *Plant Soil* 374:345–358. <https://doi.org/10.1007/s11104-013-1802-1>
- Cleveland CC, Townsend AR, Schimel DS, Fisher H, Howarth R, Hedin LO, Perakis SS, LE F, Von Fischer JC, Elseroad A, Wasson MF (1999) Global patterns of terrestrial biological nitrogen (N₂) fixation in natural ecosystems. *Glob Biogeochem Cycles* 13:623–645
- Daniell TJ, Davidson J, Alexander CJ, Caul S, Roberts DM (2012) Improved real-time PCR estimation of gene copy number in soil extracts using an artificial reference. *J Microbiol Methods* 91:38–44. <https://doi.org/10.1016/j.mimet.2012.07.010>
- De Meyer SE, Van Hoorde K, Vekeman B, Braeckman T, Willems A (2011) Genetic diversity of rhizobia associated with indigenous legumes in different regions of Flanders (Belgium). *Soil Biol Biochem* 43:2384–2396. <https://doi.org/10.1016/j.soilbio.2011.08.005>
- Denton MD, Pearce DJ, Peoples MB (2013) Nitrogen contributions from faba bean (*Vicia faba* L.) reliant on soil rhizobia or inoculation. *Plant Soil* 365:363–374. <https://doi.org/10.1007/s11104-012-1393-2>
- Depret G, Houot S, Allard M-R, Breuil M-C, Nouaim R, Laguerre G (2004) Long-term effects of crop management on *Rhizobium leguminosarum* biovar *viciae* populations. *FEMS Microbiol Ecol* 51:87–97. <https://doi.org/10.1016/j.femsec.2004.07.009>
- Fred EB, Waksman SA (1928) *Laboratory manual of general microbiology*. McGraw-Hill, New York
- Freitag S, Verrall SR, Pont SDA, McRae D, Sungurtas JA, Palau R, Hawes C, Alexander CJ, Allwood JW, Foito A, Stewart D, Shepherd LVT (2018) Impact of conventional and integrated management systems on the water-soluble vitamin content in potatoes, field beans and cereals. *J Agric Food Chem* 66:831–841
- Giambalvo D, Ruisi P, Saia S, Di Miceli G, Frenda AS, Amato G (2012) Faba bean grain yield, N₂ fixation, and weed infestation in a long-term tillage experiment under rainfed Mediterranean conditions. *Plant Soil* 360:215–227. <https://doi.org/10.1007/s11104-012-1224-5>
- Guinet M, Nicolardot B, Revellin C, Durey V, Carlsson G, Voisin A-S (2018) Comparative effect of inorganic N on plant growth and N₂ fixation of ten legume crops: towards a better understanding of the differential response among species. *Plant Soil* 432:207–227. <https://doi.org/10.1007/s11104-018-3788-1>
- Gyaneshwar P, Hirsch AM, Moulin L, Chen WM, Elliott GN, Bontemps C, Estrada-de Los Santos P, Gross E, Dos Reis FB, Sprent JI, Young JP, James EK (2011) Legume-nodulating betaproteobacteria: diversity, host range, and future prospects. *Mol Plant–Microbe Interact* 24:1276–1288. <https://doi.org/10.1094/MPMI-06-11-0172>
- Hall TA (1999) BIOEDIT: A user-friendly biological sequence alignment editor and analysis program for Windows 95/98/NT. *Nucleic Acids Symp Ser* 41:95–98
- Hauggaard-Nielsen H, Holdensen L, Wulfsohn D, Jensen ES (2010) Spatial variation of N₂-fixation in field pea (*Pisum sativum* L.) at the field scale determined by the 15 N natural abundance method. *Plant Soil* 327:167–184. <https://doi.org/10.1007/s11104-009-0043-9>
- Hawes C, Alexander CJ, Begg GS, Iannetta PPM, Karley AJ, Squire GR, Young M (2018) Plant responses to an integrated cropping system designed to maintain yield whilst enhancing soil properties and biodiversity. *Agronomy* 8:229
- Hirsch PR (1996) Population dynamics of indigenous and genetically modified rhizobia in the field. *New Phytol* 133:159–171
- Hossain Z, Wang X, Hamel C, Knight JD, Morrison MJ, Gan Y (2016) Biological nitrogen fixation by pulse crops on the semiarid Canadian Prairie. *Can J Plant Sci*. <https://doi.org/10.1139/cjps-2016-0185>
- Hothorn T, Bretz F, Westfall P (2008) Simultaneous inference in general parametric models. *Biom J* 50:346–363
- Iannetta PP, Young M, Bachinger J, Bergkvist G, Doltra J, Lopez-Bellido RJ, Monti M, Pappa VA, Reckling M, Topp CF, Walker RL, Rees RM, Watson CA, James EK, Squire GR, Begg GS (2016) A comparative nitrogen balance and productivity analysis of legume and non-legume supported cropping systems: The potential role of biological nitrogen fixation. *Front Plant Sci* 7:1700. <https://doi.org/10.3389/fpls.2016.01700>
- Jensen ES (1986) Symbiotic N₂ fixation in pea and field bean estimated by 15 N fertilizer dilution in field experiments with barley as a reference crop. *Plant Soil* 92:3–13. <https://doi.org/10.1007/bf02372260>
- Jensen ES, Peoples MB, Boddey RM, Gresshoff PM, Hauggaard-Nielsen H, Alves BJR, Morrison MJ (2012) Legumes for mitigation of climate change and the provision of feedstock for biofuels and biorefineries. A review. *Agron Sustain Dev* 32:329–364. <https://doi.org/10.1007/s13593-011-0056-7>
- Jensen ES, Peoples MB, Hauggaard-Nielsen H (2010) Faba bean in cropping systems. *Field Crops Res* 115:203–216. <https://doi.org/10.1016/j.fcr.2009.10.008>
- Jensen ES, Sørensen LH (1987) Survival of *Rhizobium leguminosarum* in soil after addition as inoculant. *FEMS Microbiol Ecol* 3:221–226. <https://doi.org/10.1111/j.1574-6968.1987.tb02359.x>
- Kumar S, Stecher G, Li M, Knyaz C, Tamura K (2018) MEGA X: Molecular evolutionary genetics analysis across computing platforms. *Mol Biol Evol* 35:1547–1549. <https://doi.org/10.1093/molbev/msy096>
- Laguerre G, Louvrier P, Allard M-R, Amarger N (2003) Compatibility of rhizobial genotypes within natural

- populations of *Rhizobium leguminosarum* biovar *viciae* for nodulation of host legumes. *Appl Environ Microbiol* 69:2276–2283. <https://doi.org/10.1128/aem.69.4.2276-2283.2003>
- Liu L, Knight J, Lemke RL, Farrell RE (2019) A side-by-side comparison of biological nitrogen fixation and yield of four legume crops. *Plant Soil* 442:169–182. <https://doi.org/10.1007/s11104-019-04167-x>
- López-Bellido L, López-Bellido RJ, Redondo R, Benítez J (2006) Faba bean nitrogen fixation in a wheat-based rotation under rainfed Mediterranean conditions: Effect of tillage system. *Field Crops Res* 98:253–260. <https://doi.org/10.1016/j.fcr.2006.03.001>
- Macdonald CA, Clark IM, Hirsch PR, Zhao F-J, McGrath SP (2011) Development of a real-time PCR Assay for detection and quantification of *Rhizobium leguminosarum* bacteria and discrimination between different biovars in zinc-contaminated soil. *Appl Environ Microbiol* 77:4626–4633. <https://doi.org/10.1128/aem.02232-10>
- Mendoza-Suárez MA, Geddes BA, Sánchez-Cañizares C, Ramírez-González RH, Kirchhelle C, Jorrin B, Poole PS (2020) Optimizing *Rhizobium*-legume symbioses by simultaneous measurement of rhizobial competitiveness and N₂ fixation in nodules. *Proc Natl Acad Sci* 117:9822–9831. <https://doi.org/10.1073/pnas.1921225117>
- Mutch LA, Young JPW (2004) Diversity and specificity of *Rhizobium leguminosarum* biovar *viciae* on wild and cultivated legumes. *Mol Ecol* 13:2435–2444
- Nutman PS, Hearne R (1979) Persistence of nodule bacteria in soil under longterm cereal cultivation. Rothamsted Experimental Station Report for 1979, Part 2
- Peix A, Ramírez-Bahena MH, Velázquez E, Bedmar EJ (2015) Bacterial associations with legumes. *CRC Crit Rev Plant Sci* 34:17–42. <https://doi.org/10.1080/07352689.2014.897899>
- Peoples MB, Bowman AM, Gault RR, Herridge DF, McCallum MH, McCormick KM, Norton RM, Rochester IJ, Scammell GJ, Schwenk GD (1991) Factors regulating the contributions of fixed nitrogen by pasture and crop legumes to different farming systems of eastern Australia. *Plant Soil* 228:29–41
- Peoples MB, Brockwell J, Herridge DF, Rochester IJ, Alves BJR, Urquiaga S, Boddey RM, Dakora FD, Bhattarai S, Maskey SL, Sampet C, Rerkasem B, Khans DF, Haugaard-Nielsen H, Jensen ES (2009) The contributions of nitrogen-fixing crop legumes to the productivity of agricultural systems. *Symbiosis* 48:1–17. <https://doi.org/10.1007/BF03179980>
- Peoples MB, Giller KE, Jensen ES, Herridge DF (2021) Quantifying country-to-global scale nitrogen fixation for grain legumes: I. Reliance on nitrogen fixation of soybean, groundnut and pulses. *Plant Soil*. <https://doi.org/10.1007/s11104-021-05167-6>
- R core Team (2013) R: A language and environment for statistical computing. R Foundation for Statistical Computing, Vienna
- R Studio Team (2015) RStudio: Integrated Development for R. RStudio. RStudio Inc., Boston
- Rose TJ, Kearney LJ, Erler DV, Rose MT, Van Zwieten L, Raymond CA (2018) Influence of growth stage and seed nitrogen on B values and potential contributions to error in estimating biological N₂ fixation using the 15 N natural abundance method. *Plant Soil* 425:389–399. <https://doi.org/10.1007/s11104-018-3600-2>
- Ruijter JM, Ramakers C, Hoogaars WMH, Karlen Y, Bakker O, van den Hoff MJB, Moorman AFM (2009) Amplification efficiency: linking baseline and bias in the analysis of quantitative PCR data. *Nucleic Acids Res* 37:e45–e45. <https://doi.org/10.1093/nar/gkp045>
- Sievers F, Wilm A, Dineen D, Gibson TJ, Karplus K, Li W, Lopez R, McWilliam H, Remmert M, Söding J, Thompson JD, Higgins DG (2011) Fast, scalable generation of high-quality protein multiple sequence alignments using Clustal Omega. *Mol Syst Biol* 7:539. <https://doi.org/10.1038/msb.2011.75>
- Sorwli FK, Mytton LR (1986) The nitrogen fixing potential of *Vicia faba* rhizobia (*R. leguminosarum*) from different agricultural locations. *Plant Soil* 92:249–254
- Sprent JI, Bradford AM, Norton C (1977) Seasonal growth patterns in field beans (*Vicia faba*) as affected by population density, shading and its relationship with soil moisture. *J Agric Sci* 88:293–301. <https://doi.org/10.1017/s0021859600034791>
- Squire GR (2017) Defining sustainable limits during and after intensification in a maritime agricultural ecosystem. *Ecosyst Health Sustain* 3:1368873. <https://doi.org/10.1080/20964129.2017.1368873>
- Squire GR, Quesada N, Begg GS, Iannetta PPM (2019) Transitions to greater legume inclusion in cropland: Defining opportunities and estimating benefits for the nitrogen economy. *Food Energy Secur* 8:e00175. <https://doi.org/10.1002/fes3.175>
- Tian CF, Young JP, Wang ET, Tamimi SM, Chen WX (2010) Population mixing of *Rhizobium leguminosarum* bv. *viciae* nodulating *Vicia faba*: the role of recombination and lateral gene transfer. *FEMS Microbiol Ecol* 73:563–576. <https://doi.org/10.1111/j.1574-6941.2010.00909.x>
- Udvardi M, Below FE, Castellano MJ, Eagle AJ, Giller KE, Ladha JK, Liu X, McClellan Maaz T, Nova-Franco B, Raghuram N, Robertson GP, Roy S, Saha M, Schmidt S, Tegeder M, York LM, Peters JW (2021) A research road map for responsible use of agricultural nitrogen. *Front Sustain Food Syst* 5. <https://doi.org/10.3389/fsufs.2021.660155>
- Unkovich MJ, Baldock J, Peoples MB (2010) Prospects and problems of simple linear models for estimating symbiotic N₂ fixation by crop and pasture legumes. *Plant Soil* 329:75–89. <https://doi.org/10.1007/s11104-009-0136-5>
- Unkovich MJ, Herridge DF, Peoples MB, Cadisch G, Boddey RM, Giller KE, Alves BJR, Chalk PM (2008) Measuring plant-associated nitrogen fixation in agricultural systems. ACIAR, Canberra
- Van Zwieten L, Rose T, Herridge DF, Kimber S, Rust J, Cowie A, Morris S (2015) Enhanced biological N₂ fixation and yield of faba bean (*Vicia faba* L.) in an acid soil following biochar addition: dissection of causal mechanisms. *Plant Soil* 395:7–20. <https://doi.org/10.1007/s11104-015-2427-3>
- Vincent JM (1970) A manual for the practical study of the root-nodule bacteria. International Biological Programme by Blackwell Scientific, Oxford

- Voisin AS, Munier-Jolain NG, Salon C (2010) The nodulation process is tightly adjusted to plant growth. An analysis using environmentally and genetically induced variation of nodule number and biomass in pea. *Plant Soil* 337:399–412. <https://doi.org/10.1007/s11104-010-0536-6>
- Walker RL, Watson CA (2011) Are inadequate soil populations of complimentary rhizobia restricting UK self sufficiency in legume protein? *Aspects of Applied Biology: Agricultural Ecology Research: Its role in delivering sustainable farm systems*, Dundee
- Westhoek A, Clark LJ, Culbert M, Dalchau N, Griffiths M, Jorin B, Karunakaran R, Ledermann R, Tkacz A, Webb I, James EK, Poole PS, Turnbull LA (2021) Conditional sanctioning in a legume–*Rhizobium* mutualism. *Proc Natl Acad Sci* 118:e2025760118. <https://doi.org/10.1073/pnas.2025760118>
- Wickham H (2016) *ggplot2: elegant graphics for data analysis*. Springer-Verlag, New York
- Wickham H, François R, Henry L, Müller K (2019) *dplyr: A grammar of data manipulation*. <https://cran.rproject.org/package=dplyr>
- Young JPW, Crossman LC, Johnston AWB, Thomson NR, Ghazoui ZF, Hull KH, Wexler M, Curson ARJ, Todd JD, Poole PS (2006) The genome of *Rhizobium leguminosarum* has recognizable core and accessory components. *Genome Biol* 7:R34

Publisher's note Springer Nature remains neutral with regard to jurisdictional claims in published maps and institutional affiliations.